

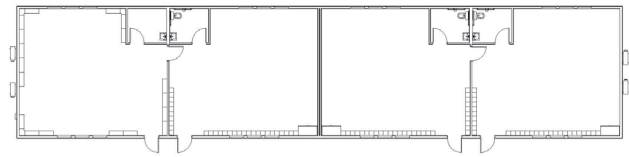


TURNER ELEMENTARY SCHOOL

Turner, OR

The Cascade School District needed a new facility to accommodate its rapid enrollment rate. Classes were so full that a few were being taught outdoors. Needless to say, time was of the essence, and with the use of modular construction, Cascade's brand new Turner Elementary school was built within budget on an extremely tight deadline. The building is one story tall and covers a total of 3584 square feet. Matching siding and awning windows were installed to compliment the existing aesthetic of the other buildings.

In addition to the fast-track timeline, the elementary school was within flood flow. Modern had to factor in flood venting and elevation certificates in order to place the building at its planned location. Turner Elementary School is a true testament to the benefits of modular construction. Building the modules off-site and then delivering them meant that speed did not sacrifice quality.



PROJECT HIGHLIGHTS

- The project took only two months to complete, starting in late December 2021 and ending in February 2022.
- The school is a single building consisting of four modules. The overall building footprint measures 28'x128'.

SUSTAINABILITY FEATURES

- Extra windows were added to bring the outside indoors and make use of as much natural sunlight as possible.
- Energy efficient ERV mini split systems were used throughout the school for zoned climate control.



WE OFFER QUALITY
FACTORY-DIRECT
BUILDINGS