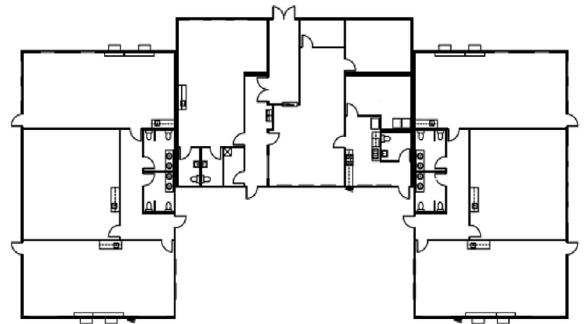




SKINNER MONTESSORI

Vancouver, WA

A secure “U” configuration was created for Skinner Montessori by installing the buildings with a singular administrative checkpoint and coded entry before access to the classrooms. Setting the buildings to grade level made the exterior more aesthetically appealing and increased the sense of permanence. ADA ramps, landings, and stairs were eliminated by pouring concrete walkways right up to the entries for easy access into the buildings. Interconnecting the three building roofs also created space above the ceiling. That space was used for routing sprinkler piping, fire/security alarm systems and the phone/data systems without having to go underground at higher costs. Utilizing modular construction saved the school time by allowing for a quick move in and saved on expenses by increasing facility flexibility.



PROJECT HIGHLIGHTS

- The building has dimensions of 42'x66'.
- The building area was 2772 square feet.
- The foundation is Stem Wall.



WE OFFER QUALITY
FACTORY-DIRECT BUILDINGS
AT A PREDICTABLE COST