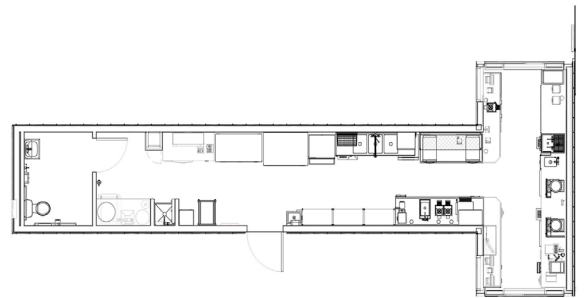


SEATTLE COFFEE CHAIN COMPANY

Portland, OR · Federal Way, WA · Kent, WA

The Carlin Kitchens To Go building was constructed with the ability to service both drive-up and walk-up clients, with integrated millwork, appliances, and serving areas. Designed with a steel frame for craning onto permanent concrete foundations, this project utilizes recycled Wyoming weathered fence for a rustic appearance and Corten steel siding for an industrial aesthetic. Decorative laser cut, powder coated screens and shades, anodized storefront windows and doors with glass, hidden air handling systems and parapets complete a turnkey package for our client. The interior has all LED lighting and Altro safety flooring with an integral base. A partnership with Carlin Manufacturing and Modern Building Systems resulted in a high quality commercial kitchen for our client and allowed each team to focus on their separate fabrication. The only items left to check off the list were site connections and a few other details, which were finished before hiring was completed.



PROJECT HIGHLIGHTS

- The building has dimensions of 24'x23'.
- The building area was 552 square feet.
- The foundation is Stem Wall.



WE OFFER QUALITY
FACTORY-DIRECT BUILDINGS
AT A PREDICTABLE COST