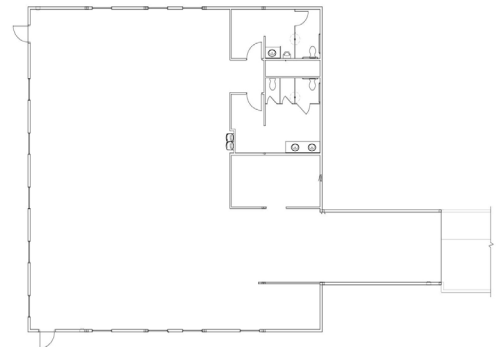




SALEM AIRPORT TERMINAL

Salem, OR

The City of Salem, OR contacted Modern looking for a quality, turnkey solution to expand and achieve savings because (after an 12-year absence) commercial air service was returning to McNary Field. The modular building was added to the existing remodeled 1950's terminal. The new configuration needed to accommodate all the needs of air traffic control; TSA, Delta Airlines, baggage handling, and rental car operations. Inside the modular terminal is the main seating area, security checkpoints, and updated communication systems. Modular construction allowed for minimal site impact near the tarmac, and less interruption for current private flights in and out of the airfield.



PROJECT HIGHLIGHTS

- The building has dimensions of 60'x60'.
- The building area was 3600 square feet.
- The foundation is Block and Level.



WE OFFER QUALITY
FACTORY-DIRECT BUILDINGS
AT A PREDICTABLE COST