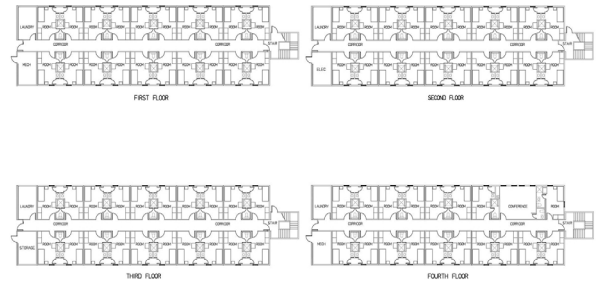




## RED DOG MINE

Northwest Arctic Borough, AK

Modern built a 4-story accommodation complex for the Red Dog Mine. Being near the top of the world brings specific challenges: temperatures of -75 degrees fahrenheit, with a wind, chill factor of -130 degrees fahrenheit, wind gusts up to 120 mph, and a permafrost earthen shell. Workers experience 24 hours of daylight during the summer and 24 hours of darkness during the winter. All materials were barge transported from the plant to the site over 45 days. The only site access for the construction crew was to be flown in. All modules were placed into position in just five days. The entire project was completed in just over six months, from engineering to occupancy.



## PROJECT HIGHLIGHTS

- The building has dimensions of 74'x36'.
- The building area was 10656 square feet.
- The foundation is Refrigerated Pilings.



WE OFFER QUALITY  
FACTORY-DIRECT BUILDINGS  
AT A PREDICTABLE COST