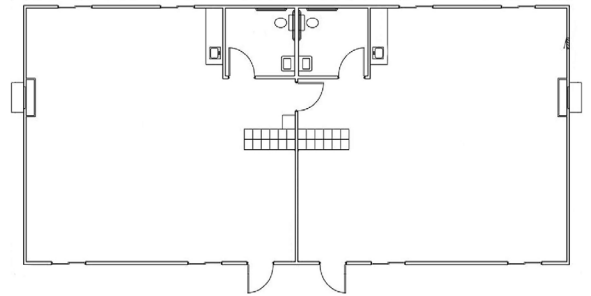




LAMB ELEMENTARY SCHOOL

Salem, OR

The Salem-Keizer School District was interested in cost effective sustainable technologies including cement board siding, recycled content trims, high efficiency HVAC systems, CO2 monitoring systems, low VOC paint and larger windows to allow for added natural light. Modern served as the general contractor, performing the excavation and foundation construction on-site, while the modular buildings were constructed at the factory. The project took a total of six months to complete, affording the School District ample time to prepare for the coming school year. Each of the three locations included a floor plan to best suit the needs of the school, as well as features such as custom cabinetry and concrete ADA ramps and landings with painted steel handrails.



PROJECT HIGHLIGHTS

- The building has dimensions of 28'x64'.
- The building area was 1792 square feet.
- The foundation is Stem Wall.



WE OFFER QUALITY
FACTORY-DIRECT BUILDINGS
AT A PREDICTABLE COST