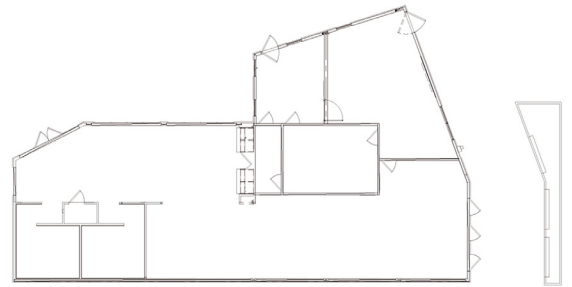




GREYHOUND SEATTLE

Seattle, WA

Greyhound Bus Lines, in conjunction with Modern, designed and built a non-combustible terminal that showcases the flexibility inherent in modular construction. Upon opening, the building was heralded by the City of Seattle as an important step forward toward improving public transportation. Replacing an aging, inconveniently located terminal, the new facility is centrally located – across the street from Seattle Metro and within walking distance of Safeco Field. Underneath the freeway overpasses, nestled between giant support pillars and a parking garage, the building's design brings a high level of usability to a previously abandoned (and “recycled”) lot. The newest jewel in Greyhound expansion fits Seattle's commitment to developing environmentally-conscious structures, coupled with a unique, contemporary appearance that includes many low maintenance features.



PROJECT HIGHLIGHTS

- The building has dimensions of 70'x43'.
- The building area was 3010 square feet.
- The foundation is Stem Wall.



WE OFFER QUALITY
FACTORY-DIRECT BUILDINGS
AT A PREDICTABLE COST