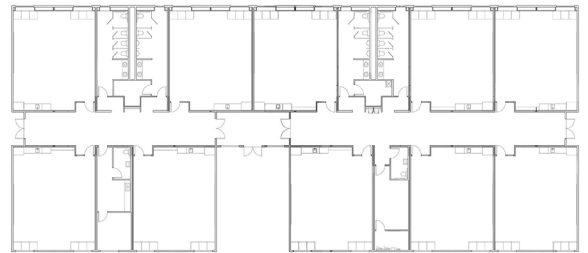




GRANDVIEW SCHOOL DISTRICT

Grandview, WA

In Southeast Washington, Grandview School District's remodel was contingent on creating flex space to temporarily house students while two of their facilities were under renovation. The classroom modules were shipped to the site, and the interior corridor was then constructed on-site using prefabricated wall, roof truss, and floor assemblies. Building a spacious corridor allowed for the easy transition of students, and facilitated space for heat/air conditioning ducting, fire sprinkler piping and phone/data wiring to be routed above the suspended ceiling.



PROJECT HIGHLIGHTS

- The building has dimensions of 74'x187'.
- The building area was 13838 square feet.
- The foundation is Stem Wall.



WE OFFER QUALITY
FACTORY-DIRECT BUILDINGS
AT A PREDICTABLE COST