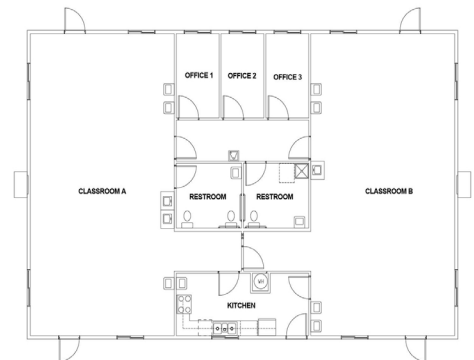




EVERGREEN EOCF

Vancouver, WA

Pierce County Library System's vision for their newest outlying facility includes quality finishes found in custom homes paired with the grace of strong architectural elements. Open trusses and beams give this space strength. Coupled with self-dimming light fixtures and extensive use of highly insulated vinyl windows (including skylights), an ideal environment was created, using day-lighting to full advantage. High-efficiency HVAC units with economizers and insulated spiral ducting created comfort for the readers inside. The local News Tribune described the building at its opening as "...a single open room, wrapped in glass and bathed in light."



PROJECT HIGHLIGHTS

- The building has dimensions of 42'x64'.
- The building area was 2688 square feet.
- The foundation is Pit Set.



WE OFFER QUALITY
FACTORY-DIRECT BUILDINGS
AT A PREDICTABLE COST