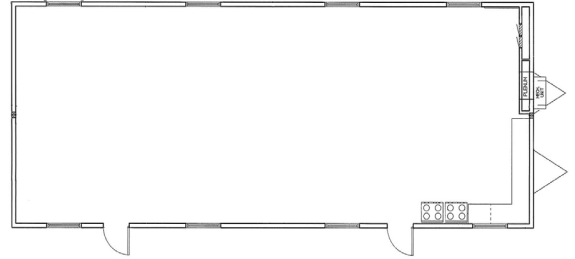




## CH2M HILL HANFORD

Richland, WA

Modern was selected to provide a wide range of single and multi-wide office trailers at the Hanford Nuclear Waste Clean-Up site in Richland, WA. CH2M Hill is a large contractor serving the Department of Energy. The project involved over 45 buildings that were delivered and installed within restricted areas. Hanford has extremely rigorous safety requirements due to the environment, and number, size, and scope of ongoing projects. The buildings utilize environmentally friendly, energy saving features which include insulated windows, motion sensors for florescent lighting, extensive use of recycled materials, and wall hung heat pumps, as well as required upgraded electrical items and steps/ ramps that met ADA, OSHA and NPPA 101.



### PROJECT HIGHLIGHTS

- The building has dimensions of 24'x60'.
- The building area was 1440 square feet.
- The foundation is Block and Level.



WE OFFER QUALITY  
FACTORY-DIRECT BUILDINGS  
AT A PREDICTABLE COST