

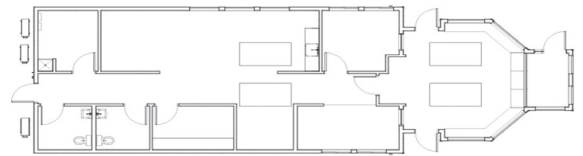


ASHLAND PORT OF ENTRY

Ashland, OR

The Ashland Port of Entry is the official weigh facility & border control enforcement office between the Oregon and California border. The Oregon Department of Transportation had been operating out of the same structure for over 50 years and required a new facility. The exterior design allows for max visibility and is reminiscent of a ship sailing the I-5 corridor. Unique angles put the weigh masters at the helm, increasing their ability to assist drivers safely and efficiently.

The modular building installation and onsite upgrades were restricted to a 21-day window, from demo of the existing building through completion of project. During shut down, the port authority would not be conducting safety inspections or generating revenue. Choosing modular to minimize port closure time made the difference in regaining traffic safety and reducing the social cost of accidents.



PROJECT HIGHLIGHTS

- The building has dimensions of 24' x 73'.
- The building area was 1752 square feet.
- The foundation is Stem Wall



WE OFFER QUALITY
FACTORY-DIRECT BUILDINGS
AT A PREDICTABLE COST