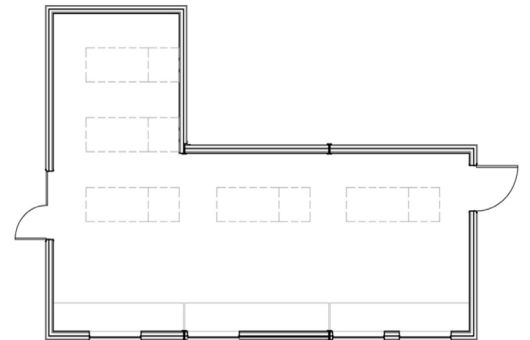




AEROSPACE COMPANY

Seattle, WA

This design build project of an 836 sq. ft. non-combustible, essential services building is a critical component of a new aircraft engineering project. The building is full of high density, electronic, data processing cable trays, which allow the engineers to control all testing from inside the building. The modular structure was designed with all steel construction, using a perimeter frame with 24 gauge corrugated sub-floor with a concrete overlay. Ten-foot open ceilings allow easy access to all electrical racks and ducting inside the building. The building was welded to a steel beam foundation, designed so that if a nearby fuel line burst, the fuel would flow freely past the building rather than pooling under it.



PROJECT HIGHLIGHTS

- The building has dimensions of 29'x41
- The building area was 1189 square feet.
- The foundation is Block and Level.



WE OFFER QUALITY
FACTORY-DIRECT BUILDINGS
AT A PREDICTABLE COST