

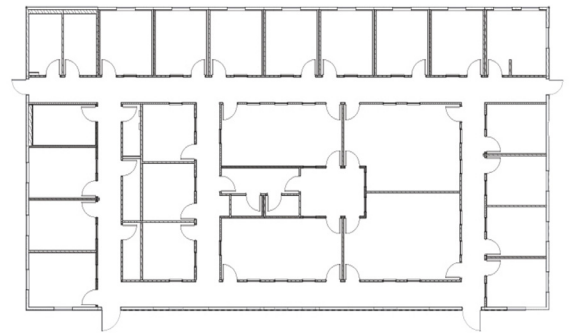


OREGON STATE PRISON

Salem, OR

Oregon State Penitentiary had the need for a new behavioral health clinic to aid inmates with mental and behavioral illnesses. The facility was designed with the help of prison staff in a circular fashion with a central security space to safely move prisoners and promote safety for everyone in the facility. There are two physicians' offices, a counselor's office and four treatment classrooms to provide aid for the inmates.

Offsite construction of this facility allowed the onsite time to be minimized from a 12- 16-month construction time frame to 28 days, the extensive reduction of on-site construction resulted in enormous savings. The accelerated completion schedule over "site built" not only saved cost, but dramatically reduced the disruptions to daily activities inside the prison and prioritized safety. Successful use of offsite construction for this project has lead Oregon State Penitentiary to look into using this method on future projects .



PROJECT HIGHLIGHTS

- The building has dimensions of 60'x144'.
- The building area was 8640 square feet.
- The foundation is Post & Beam.



WE OFFER QUALITY
FACTORY-DIRECT BUILDINGS
AT A PREDICTABLE COST