



MODERN BUILDING SYSTEMS, INC.

"The Environmentally Smart Choice..."

UMATILLA COUNTY

PROJECT SUMMARY



Umatilla County chose us to create a transitional center for discharged offenders at their Pendleton Corrections location. The facility was designed to serve as a supervised dormitory unit, providing secure housing to individuals looking to better themselves. Conceptual designs were presented to Modern Building Systems, Inc., and after several iterations, a final design was approved by the county for the facility. During the design phase of construction, several visits were made by Modern's staff to help the county make final plans for the proper placing of the building on the property and to help the corrections department wade through some of the local red tape.

As a dormitory, the transitional center had to meet commercial and residential code requirements. The building provides nine individual rooms, a common living area, a large full-service kitchen and a bathroom/shower area for the occupants. Durability and security were common themes as the plans were being drawn by Modern. Institutional-grade metal doors and hardware were placed at each doorway and room specific keys were assigned to each lock. Walls were covered with our durable vinyl-wrapped gypsum, the floor was done with colorful vinyl tile and the ceiling was completed with an acoustic tile drop ceiling.

Umatilla Corrections was designed and built as a permanent modular structure. Modern placed a permanent concrete foundation on site three weeks prior to delivery and installation of the building. When our transportation department delivered the four component pieces from our plant, our in-house site crew went to work seaming the pieces together. We placed the building on the foundation the first day and had the facility operational three days later. The corrections department had decided to award site work to some of the local contractors, and by scheduling tightly, within a week the power was on, water was running and all of the ramps and landings had been placed around the building.

Operational costs were a major consideration for the county. The building was given a separate vestibule entrance to minimize outside air infiltration and was built using low flow water management systems for the kitchen and restroom. Energy-efficient lighting fixtures provided ample light for the occupants while the county realized substantial cost savings on monthly electric bills. Extreme temperatures in the area are minimized inside the building due to tight construction techniques, high-density insulation and double pane vinyl windows. To provide comfort and security for the tenants, the building was given a split system heat pump and a residential-grade fire suppression system.

We are *"The Environmentally Smart Choice..."* for all your building needs. Contact us today to learn more.

FEATURES:

- Permanent modular construction
- Energy-efficient building envelope
- Central HVAC utilizing a high efficiency heat pump
- On-time performance-driven schedule
- Cooperative building design based on customer needs



www.modernbuildingsystems.com

800.682.1422

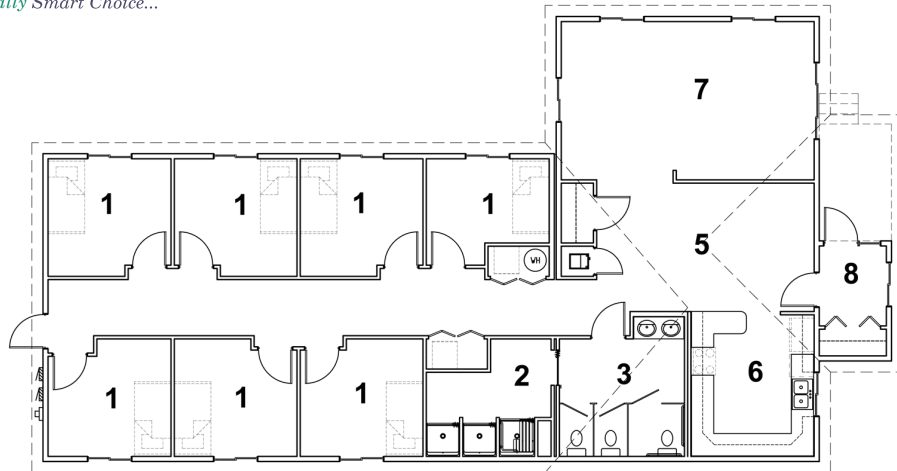


MODERN BUILDING SYSTEMS, INC.

"The Environmentally Smart Choice..."

Umatilla County

- 1 Room
- 2 Shower Room
- 3 Restroom
- 4 Storage
- 5 Dining Room
- 6 Kitchen
- 7 Living Room
- 8 Entry



QUALITY IS OUR FUTURE. AND YOURS.

What makes Modern special? Simply put, **it's our team.**

Our people are the difference. They produce a quality product that's simply unmatched in the modular industry. Since December 6, 1971, our team has been passionate about what we build and how we put it all together. Our strength, experience and commitment to quality is why we'll be around for a long time to come, making sure our customers enjoy the best quality products at the most competitive prices.

We're the oldest commercial modular building company on the West Coast. Modern is 130 team members strong – and we're growing. We're a family owned and operated business, started by Don Rasmussen and carried on by his sons, Jim and Ken Rasmussen.

Our company is a design-and-build manufacturer, constructing everything from offices, medical building and classrooms – essentially anything but residential. **We've worked for government agencies across the country, built a blast-proof flight simulator for Boeing and constructed a four-story building at the Red Dog Mine near the Arctic Circle.**

Our modular construction offers significant savings over traditional, site-built construction. Our structures are factory-built, allowing construction to occur during any season, and installed quickly, saving time and reducing costs. We lease and sell temporary job-site trailers, mobile sales offices, construction-site offices, portable classrooms, complete schools, modular offices, medical clinics, modular daycare facilities, relocatable buildings, restroom/shower trailers and prefabricated buildings. We have our own fleet of delivery trucks, and maintain our own installation crews, equipment and service departments, so we're 100% responsible for our work.

We pride ourselves on being the number one choice for top-quality, environmentally friendly buildings at very competitive prices, with no dealer-reseller mark-ups. Our goal is your satisfaction – and making sure your needs have been met and exceeded. Call us today for more information.

TESTIMONIALS

What our clients have to say:

"Without Modern Building Systems' outstanding management and competent, professional staff, it would not have been possible to consistently meet our tight budgets and limited schedule.

*–Reg Martinson,
Director of Facilities
Evergreen School District*

CONTACT US TODAY

Oregon

P.O. Box 110 9493 Porter Road
Aumsville, OR 97325 USA
Phone: 503.749.4949
Fax: 503.749.4950

Washington

1550 Thornton Avenue SW
Pacific, WA 98047 USA
Phone: 253.863.8863
Fax: 253.863.8867

California

605 Sutter Street
West Sacramento, CA 95691 USA
Phone: 916.985.9852
Fax: 912.985.9865