



**MODERN BUILDING SYSTEMS, INC.**

*"The Environmentally Smart Choice..."*

## PROJECT SUMMARY



The Rogue Valley Council of Governments is a non-profit organization established to aid the development and coordination of local agencies in Southern Oregon. Modern Building Systems, Inc. was approached to provide an economical solution for the need that the Council had for a conference area addition to their main headquarters in Central Point, Oregon. The 2,520-square-foot addition was designed specifically to serve as an assembly area for the Council.

The primary function for the space was to provide for multi-media presentations to the member organizations for technical support. Modern provided multiple server controlled presentation screens, which were hidden in recessed cavities in the ceiling as well as the data and information centers to connect multiple projectors and computers. Floor-mounted electrical outlets were installed to provide for various power access points for the occupants and floor mounted data ports were aligned with the customer's furniture plan to provide for seamless integration of all terminal connections. Also included in the project was a track mounted removable wall, allowing the space to serve in alternate configurations as needed for smaller meetings.

The fully ADA compliant modular building was installed at grade on a concrete stem-wall foundation. This simple detail allowed Modern to set the building at the same floor level as the existing building, eliminating ramp requirements and adding to the overall aesthetics of the structure. The exterior of the building was designed to blend with and enhance the existing block wall structure. Hardiboard cement panels were used to closely match the existing building and to provide a slight contrast and enhancement to the block wall appearance. Overall building height was precisely brought in under the existing structure to add to the "original" appearance of the addition. Standard wall hung HVAC units had removable lattice coverings and landscaping placed around them to provide a natural appeal from the street. To add abundant natural light to the conference area, large thermally efficient picture windows were part of the plan for the conference room.

Even with the complications of tying into an existing structure, the attention to detail provided before our installation meant that the modular units were installed with minimal disruption to the tenants. All of the work was scheduled to be completed on site in less than a week and the final product was fully functional and performing as intended as our crews were finishing up the final touches.

When you need efficiency, quality and flexibility, Modern Building Systems is *"The Environmentally Smart Choice..."*

## FEATURES:

- Blended seamlessly with existing structure
- Met need for conference space
- Large amounts of technical cabling required
- Minimal site work
- Easy-to-use wall track for conference room





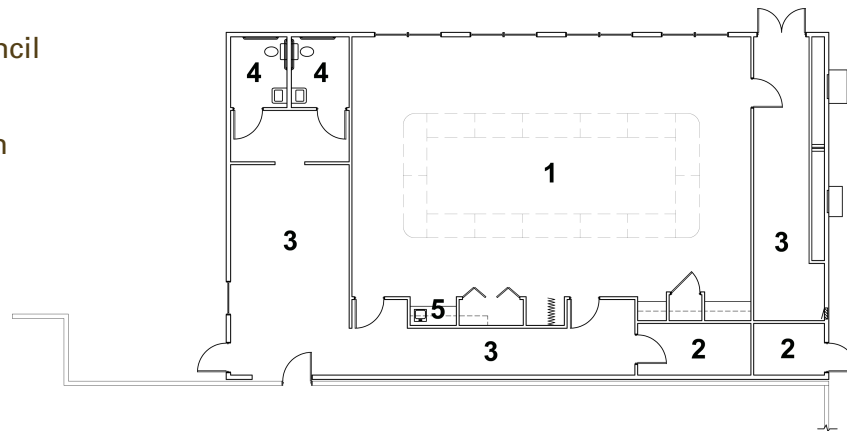
# ROGUE VALLEY COUNCIL OF GOVERNMENTS

**MODERN BUILDING SYSTEMS, INC.**

*"The Environmentally Smart Choice..."*

Rogue Valley Council  
of Governments

- 1 Meeting Room
- 2 Storage
- 3 Corridor
- 4 Restroom
- 5 Sink Area



## QUALITY IS OUR FUTURE. AND YOURS.

What makes Modern special? Simply put, **it's our team.**

**Our people are the difference. They produce a quality of product that's simply unmatched in the modular industry. Since December 6, 1971, our team has been passionate about what we build and how we put it all together.** Our strength is our longevity. And that strength and commitment to quality is why we'll be around for a long time to come, making sure our customers enjoy the best quality products at the most competitive prices.

**We're the oldest commercial modular building company on the West Coast. Modern is 130 team members strong – and we're growing.** We're a family owned and operated business, started by Don Rasmussen and carried on by his sons, Jim and Ken Rasmussen.

Our company is a design-and-build manufacturer, constructing everything from offices, medical building and classrooms – essentially anything but residential. **We've worked for government agencies across the country, built a blast-proof flight simulator for Boeing and constructed a four-story building at the Red Dog Mine near the Arctic Circle.**

**Our modular construction offers significant savings over traditional, site-built construction.** Our structures are factory-built, allowing construction to occur during any season, and installed quickly, saving time and reducing costs. We lease and sell temporary job-site trailers, mobile sales offices, construction-site offices, portable classrooms, complete schools, modular offices, medical clinics, modular daycare facilities, relocatable buildings, restroom/shower trailers and prefabricated buildings. We have our own fleet of delivery trucks, and maintain our own installation crews, equipment and service departments, so we're 100% responsible for our work.

**We pride ourselves on being the number one choice for top-quality, environmentally friendly buildings at very competitive prices, with no dealer-reseller mark-ups. Our goal is your satisfaction – and making sure your needs have been met and exceeded.** Call us today for more information.

### TESTIMONIALS

What our clients have to say:

*"It has been a pleasure to conduct business with your company. All of the representatives from your company, including receptionists, installers, and traffic engineer have provided excellent customer service."*

*–Administrative Services  
Supervisor  
Albany Police Department*

## CONTACT US TODAY

### Oregon

P.O. Box 110 9493 Porter Road  
Aumsville, OR 97325 USA  
Phone: 503.749.4949  
Fax: 503.749.4950

### Washington

1550 Thornton Avenue SW  
Pacific, WA 98047 USA  
Phone: 253.863.8863  
Fax: 253.863.8867

### California

605 Sutter Street  
West Sacramento, CA 95691 USA  
Phone: 916.985.9852  
Fax: 912.985.9865