



MODERN BUILDING SYSTEMS, INC.

"The Environmentally Smart Choice..."

RED DOG MINE

PROJECT SUMMARY



Modern Building Systems, Inc. built a four-story, 80-room permanent accommodations complex for the Red Dog Mine employees. The temperature on this site can dip down to 75 degrees below zero and the wind chill factor can reach minus 130 degrees Fahrenheit.

This structure was the fifth wing addition to an existing modular building, increasing the total housing capacity to up over 400 occupants. All materials were transported to the site by barge, which took approximately 45 days from the plant to the site. The only access to the site for the construction crew was to be flown in and Mother Nature determined the workers' schedules.

Being near the top of the world brought on other problems as well. Wind gusts reached up to 120 mph during winter storms and a permafrost earthen shell required a pile driven into the Earth's crust at depths of up to 30 feet in some areas. While on-site our workers experience 24 hours of daylight during the summer and 24 hours of darkness during the winter, this posed some special requirements on the building as well. All of the windows were fitted with light blocking shades, so that weary summer workers could get some much needed rest after a long day of mining one of the world's largest lead and zinc reserves.

Even with the weather and special needs, all modules were placed into position in just five days. The project was completed in just over six months, from engineering to occupancy.

We are **"The Environmentally Smart Choice..."** for all your building needs. Contact us today to learn more.

FEATURES:

- Permanent four-story wood modular structure
- Remote Arctic location
- 80-room addition
- Furnished units
- Temperature ranges from -75°F to 60°F





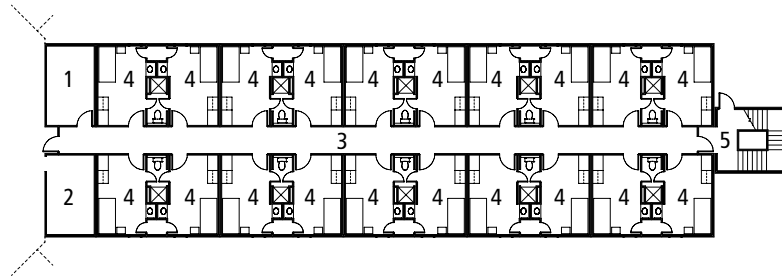
MODERN BUILDING SYSTEMS, INC.

"The Environmentally Smart Choice..."

RED DOG MINE

Red Dog Mine

- 1 Laundry
- 2 Utility
- 3 Corridor
- 4 Rooms
- 5 Stairway



QUALITY IS OUR FUTURE. AND YOURS.

What makes Modern special? Simply put, **it's our team.**

Our people are the difference. They produce a quality of product that's simply unmatched in the modular industry. Since December 6, 1971, our team has been passionate about what we build and how we put it all together. Our strength is our longevity. And that strength and commitment to quality is why we'll be around for a long time to come, making sure our customers enjoy the best quality products at the most competitive prices.

We're the oldest commercial modular building company on the West Coast. Modern is 130 team members strong – and we're growing. We're a family owned and operated business, started by Don Rasmussen and carried on by his sons, Jim and Ken Rasmussen.

Our company is a design-and-build manufacturer, constructing everything from offices, medical building and classrooms – essentially anything but residential. **We've worked for government agencies across the country, built a blast-proof flight simulator for Boeing and constructed a four-story building at the Red Dog Mine near the Arctic Circle.**

Our modular construction offers significant savings over traditional, site-built construction. Our structures are factory-built, allowing construction to occur during any season, and installed quickly, saving time and reducing costs. We lease and sell temporary job-site trailers, mobile sales offices, construction-site offices, portable classrooms, complete schools, modular offices, medical clinics, modular daycare facilities, relocatable buildings, restroom/shower trailers and prefabricated buildings. We have our own fleet of delivery trucks, and maintain our own installation crews, equipment and service departments, so we're 100% responsible for our work.

We pride ourselves on being the number one choice for top-quality, environmentally friendly buildings at very competitive prices, with no dealer-reseller mark-ups. Our goal is your satisfaction – and making sure your needs have been met and exceeded. Call us today for more information.

TESTIMONIALS

What our clients have to say:

"Modular buildings are fantastic. As soon as I can I'm going to build another. I can't understand why more people aren't building modular."

*–Jim Aydelott
Symantec Corporation,
Operations Manager
Seattle Daily Journal of
Commerce*

CONTACT US TODAY

Oregon

P.O. Box 110 9493 Porter Road
Aumsville, OR 97325 USA
Phone: 503.749.4949
Fax: 503.749.4950

Washington

1550 Thornton Avenue SW
Pacific, WA 98047 USA
Phone: 253.863.8863
Fax: 253.863.8867

California

605 Sutter Street
West Sacramento, CA 95691 USA
Phone: 916.985.9852
Fax: 912.985.9865