



**MODERN BUILDING SYSTEMS, INC**

*"The Environmentally Smart Choice..."*

# Project Summary

**Roberson RV Office**

[www.mbs-modular.com](http://www.mbs-modular.com)



Modern Building Systems built this sales office at a new location for a retail RV Center in Salem, Oregon in 2006. The new location features freeway visibility and has a high customer traffic level. For easy access, all four sides of the building have exterior doors installed, three of which are double storefront glass doors.

The main entry from the parking lot is recessed and has an awning above, breaking up the roof line with its standing seam metal-angled mansard around the perimeter of the building. The exterior of the building is lap-sided and includes 3/0x5/0 galvanized framed windows. The building was installed on a concrete foundation with the customer parking lot facing the front and the RV sales lot around the other three sides. The building is a 2,520 square foot structure; its layout has the main sales area in the front of the building and private offices with break and restroom facilities toward the back side. The interior has a taped, textured and painted wall finish with suspended acoustical ceilings and high grade carpeting. The lights have parabolic lenses to create an appealing and professional atmosphere.

Time was a deciding factor for the customer's decision on modular construction. All site development, including utilities, was coordinated by another contractor while the building was being built in our factory. Modern Building Systems was able to complete the structure ahead of schedule and then successfully install it on site to be ready for the sales center opening.

Modern Building Systems' experience in retail and sales office space can help you to establish your business at your chosen location.

## Features:

- Standing seam metal angled mansard
- Lap siding
- Double glass doors on three of four sides
- Freeway visibility
- Stem wall foundation
- Completed ahead of schedule

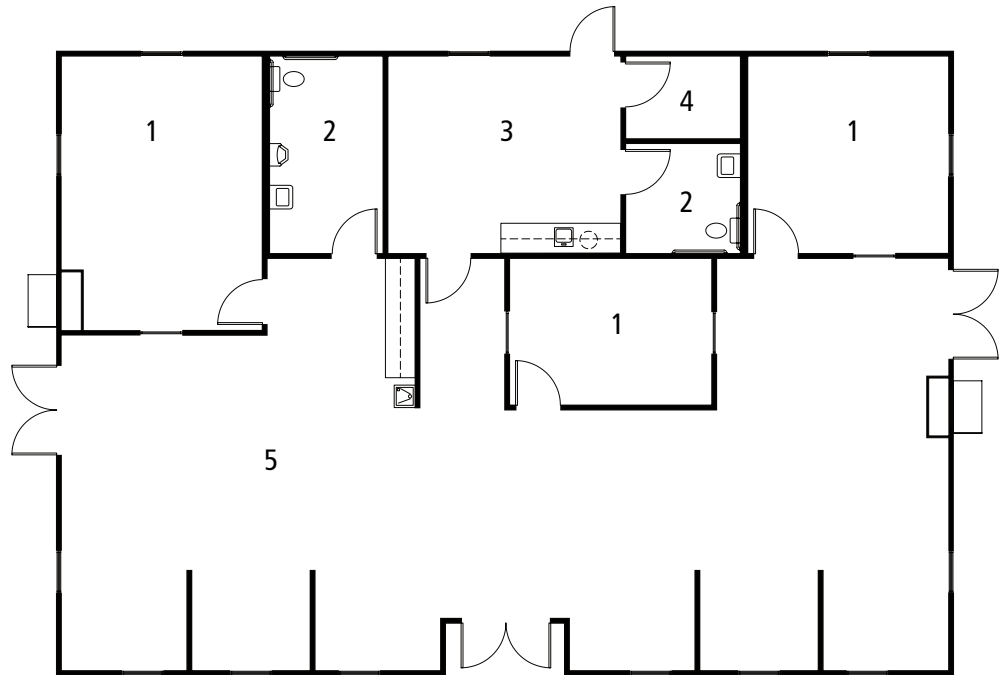
**P.O. Box 110 9493 Porter Road  
Aumsville, OR 97325 USA**  
tel: 503.749.4949  
fax: 503.749.4950

**1550 Thornton Avenue SW  
Pacific, WA 98047 USA**  
tel: 253.863.8863  
fax: 253.863.8867

**605 Sutter Street  
West Sacramento, CA 95691 USA**  
tel: 916.985.9852  
fax: 916.985.9865

## Roberson RV Office

1. Office
2. Washroom
3. Lunchroom
4. Storage
5. Open Office



## Modern Building Systems, Inc. Mobile and Modular Offices: Tomorrow's Solutions Today

When you consider the time, cost and flexibility your new building will involve consider **Modern Building Systems**.

We offer speed and efficiency for expansion or relocation and can build to compliment existing structures. Our economical, attractive, and functional commercial space is built with environmentally responsible turnkey construction.

Complete services include design and engineering offering potential savings in construction costs over site-built buildings. Your complete facility will be built on our premises and is ready for immediate occupancy on your land within days. If you need, the entire modular building can be relocated to another site in the future.

Our personal service and professional staff will work with you to meet all your building needs. For an accurate advance estimate of the budget and time requirements of a modular solution, call today for more information.

*"Without Modern Building Systems' outstanding management and competent, professional staff, it would not have been possible to consistently meet our tight budgets and limited schedule."*

Reg Martinson, Director of Facilities  
Evergreen School District

### Modern Building Systems, Inc.

**800.682.1422**

Visit us at:

**[www.mbs-modular.com](http://www.mbs-modular.com)**

#### Oregon

**P.O. Box 110 9493 Porter Road  
Aumsville, OR 97325 USA**

tel: 503.749.4949

fax: 503.749.4950

#### Washington

**1550 Thornton Avenue SW  
Pacific, WA 98047 USA**

tel: 253.863.8863

fax: 253.863.8867

#### California

**605 Sutter Street  
West Sacramento, CA 95691 USA**

tel: 916.985.9852

fax: 912.985.9865