



**MODERN BUILDING SYSTEMS, INC**

*"The Environmentally Smart Choice..."*

# Project Summary

**Grandview School**

[www.mbs-modular.com](http://www.mbs-modular.com)



**Grandview School District** is located in the southern area of eastern Washington near the Columbia Gorge. The school was in the process of completely renovating space in two of their schools and needed to house students while this lengthy project ensued.

**Modern Building Systems** constructed and shipped 20,000 square feet of modules to the site and then constructed the interior corridor for this project on site using pre-cut wall, roof truss and floor assemblies. The corridor had to be site constructed due to transportation limits on length and height.

Building a spacious corridor not only allowed for easy movement of children as they passed from class to class, but also facilitated space for heat/air conditioning ducting, fire sprinkler piping and phone/data wiring to be routed above the suspended ceiling.

Utilizing modular construction for some of the new space required for this school, gave more time to complete the site built portion of this project without sacrificing school days while construction ensued.

Ensuring that this modular space tied in with the new site built space being constructed, the same finishes were used. Custom wallpaper on interior walls, custom built casework, cherry laminated interior doors with welded frames and re-lites and solid plastic partitions in restrooms, to name a few of the quality finishes.

## Features:

- Finishes to match new construction
- Cement fibrous lap siding
- Custom built plastic laminate shelving and cabinetry
- Complete sprinkler & fire alarm systems
- Tight timelines for completion

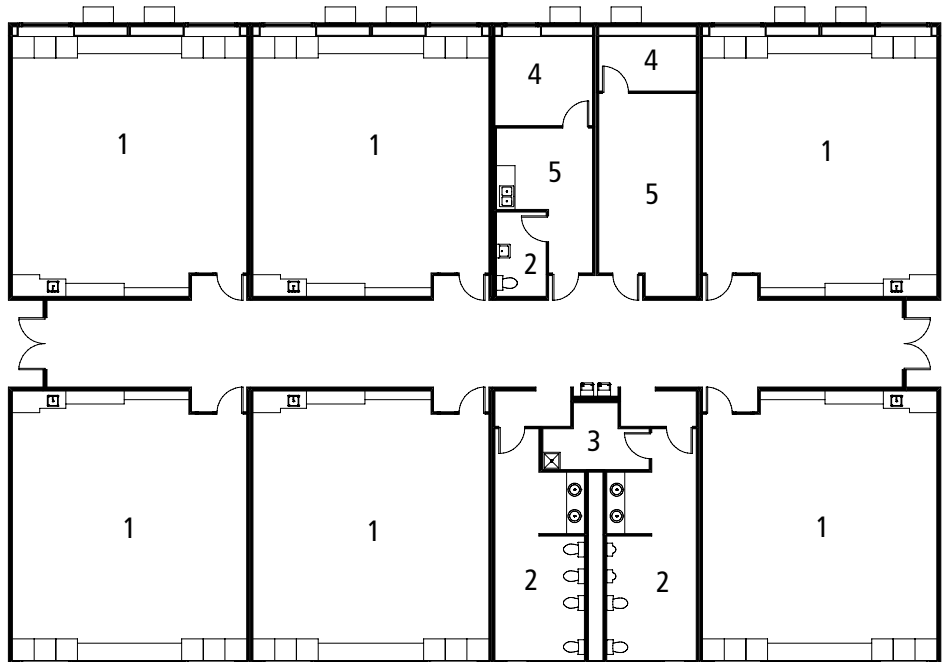
**P.O. Box 110 9493 Porter Road  
Aumsville, OR 97325 USA**  
tel: 503.749.4949  
fax: 503.749.4950

**1550 Thornton Avenue SW  
Pacific, WA 98047 USA**  
tel: 253.863.8863  
fax: 253.863.8867

**605 Sutter Street  
West Sacramento, CA 95691 USA**  
tel: 916.985.9852  
fax: 912.985.9865

## Grandview School District Classroom Modules

1. Classroom
2. Restrooms
3. Storage
4. Office
5. Workroom



## Modern Building Systems, Inc. Mobile and Modular Offices: Tomorrow's Solutions Today

When you consider the time, cost and flexibility your new building will involve consider **Modern Building Systems**.

We offer speed and efficiency for expansion or relocation and can build to compliment existing structures. Our economical, attractive, and functional commercial space is built with environmentally responsible turnkey construction.

Complete services include design and engineering offering potential savings in construction costs over site-built buildings. Your complete facility will be built on our premises and is ready for immediate occupancy on your land within days. If you need, the entire modular building can be relocated to another site in the future.

Our personal service and professional staff will work with you to meet all your building needs. For an accurate advance estimate of the budget and time requirements of a modular solution, call today for more information.

*"Without Modern Building Systems' outstanding management and competent, professional staff, it would not have been possible to consistently meet our tight budgets and limited schedule."*

Reg Martinson, Director of Facilities  
 Evergreen School District

### Modern Building Systems, Inc.

**800.682.1422**

Visit us at:  
[www.mbs-modular.com](http://www.mbs-modular.com)

#### Oregon

**P.O. Box 110 9493 Porter Road  
 Aumsville, OR 97325 USA**

tel: 503.749.4949

fax: 503.749.4950

#### Washington

**1550 Thornton Avenue SW  
 Pacific, WA 98047 USA**

tel: 253.863.8863

fax: 253.863.8867

#### California

**605 Sutter Street  
 West Sacramento, CA 95691 USA**

tel: 916.985.9852

fax: 912.985.9865