



MODERN BUILDING SYSTEMS, INC

"The Environmentally Smart Choice..."

Project Summary

Flat Creek Ranger Station

www.mbs-modular.com



Flat Creek Ranger Station is located in Oregon in a remote area in the Winema National Forest. A unique design was incorporated into this structure to help tie the two separate structures together and add an interesting architectural effect. With the structure being manufactured off-site and having a short construction period with less building material on-site, these conditions made this an environmentally friendly project.

The Forest Service was so impressed with their first addition in the late 1980's that three more phases were added later. With the modular construction, adding additional space was easy. There was less disruption to existing work spaces, shorter on-site construction times and standardized design and engineering which all worked together to make modular construction a wise choice of resources.

The interior finishes of this office complex included commercial grade carpet, suspended grid acoustical ceilings, high performance insulated windows, solidcore wood doors and sound insulation in the walls.

When you need efficiency, quality and flexibility, **Modern Building Systems** is *"The Environmentally Smart Choice..."*.

Features:

- Remote site made it difficult to find quality contractors in the area
- Controlled construction conditions minimized weather delays
- Modular method minimized raw materials usage
- Unique design to enhance appearance
- Custom interiors made efficient use of every available foot of square footage

**P.O. Box 110 9493 Porter Road
Aumsville, OR 97325 USA**

tel: 503.749.4949

fax: 503.749.4950

**1550 Thornton Avenue SW
Pacific, WA 98047 USA**

tel: 253.863.8863

fax: 253.863.8867

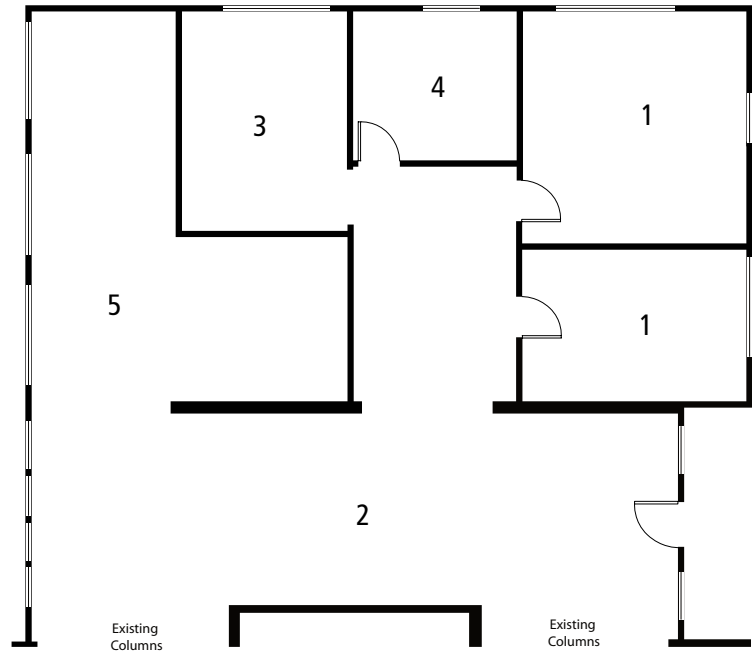
**605 Sutter Street
West Sacramento, CA 95691 USA**

tel: 916.985.9852

fax: 912.985.9865

Flat Creek Ranger Station

1. Offices
2. Lobby
3. Copy Area
4. Storage
5. Employee Lounge



Modern Building Systems, Inc. Mobile and Modular Offices: Tomorrow's Solutions Today

When you consider the time, cost and flexibility your new building will involve consider **Modern Building Systems**.

We offer speed and efficiency for expansion or relocation and can build to compliment existing structures. Our economical, attractive, and functional commercial space is built with environmentally responsible turnkey construction.

Complete services include design and engineering offering potential savings in construction costs over site-built buildings. Your complete facility will be built on our premises and is ready for immediate occupancy on your land within days. If you need, the entire modular building can be relocated to another site in the future.

Our personal service and professional staff will work with you to meet all your building needs. For an accurate advance estimate of the budget and time requirements of a modular solution, call today for more information.

"Without Modern Building Systems' outstanding management and competent, professional staff, it would not have been possible to consistently meet our tight budgets and limited schedule."

Reg Martinson, Director of Facilities
 Evergreen School District

Modern Building Systems, Inc.

800.682.1422

Visit us at:
www.mbs-modular.com

Oregon

**P.O. Box 110 9493 Porter Road
 Aumsville, OR 97325 USA**

tel: 503.749.4949

fax: 503.749.4950

Washington

**1550 Thornton Avenue SW
 Pacific, WA 98047 USA**

tel: 253.863.8863

fax: 253.863.8867

California

**605 Sutter Street
 West Sacramento, CA 95691 USA**

tel: 916.985.9852

fax: 912.985.9865