



MODERN BUILDING SYSTEMS, INC

"The Environmentally Smart Choice..."

Project Summary

Clackamas County Corrections

www.mbs-modular.com



Modern Building Systems has been providing complete service from design and engineering to site preparation and turnkey construction for over 23 years. We offer personalized service and customized plans within your budget.

Meeting our customers' specific requirements begins with our management team. They coordinate all aspects of the project including design, engineering and construction. With a modular prison facility all of the additional costs for security and long-term, on-site work crews are virtually eliminated. Only the final phases of construction are completed inside the security compound.

Clackamas County Corrections Work Release Center is just one example of the complex modular buildings we can provide for the prison industry. This project was built in 1992 and features an intricate electrical system incorporated throughout the 19,870 sf building.

Clackamas County Corrections Work Release Center had special requirements for location on a flood plain. Our engineering team designed the building's finished floor to be approximately 5' above the outside grade and incorporated a unique flood plain foundation system.

Clackamas County Corrections Work Release Center has integrated systems for security, fire, voice/data and energy conservation. A complete commercial kitchen facility on premise was designed to accommodate serving 100 people. The entire project was completed in 120 days and ready for immediate occupancy. The entire modular building may be located to another site in the future. This feature is a big advantage when it is necessary to have an initial location on leased ground..

Features:

- Complete site development including excavation, utilities and parking lot
- Intricate electrical system throughout the building
- Innovation and excellence in modular built space
- Controlled modular construction results in fast and cost-effective projects
- Higher quality for the price

**P.O. Box 110 9493 Porter Road
Aumsville, OR 97325 USA**
tel: 503.749.4949
fax: 503.749.4950

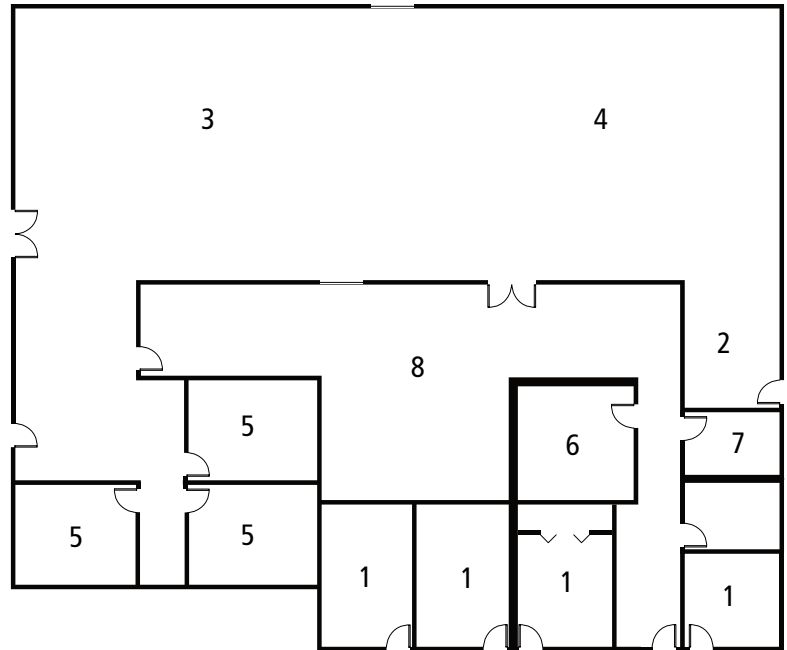
**1550 Thornton Avenue SW
Pacific, WA 98047 USA**
tel: 253.863.8863
fax: 253.863.8867

**605 Sutter Street
West Sacramento, CA 95691 USA**
tel: 916.985.9852
fax: 912.985.9865

Clackamas County Community Corrections Work Release Facility

Field Site

1. Offices
2. Lobby
3. Day Area
4. Dining
5. Group Areas
6. Security
7. Restrooms
8. Control/Reception



Modern Building Systems, Inc. Mobile and Modular Offices: Tomorrow's Solutions Today

When you consider the time, cost and flexibility your new building will involve consider **Modern Building Systems**.

We offer speed and efficiency for expansion or relocation and can build to compliment existing structures. Our economical, attractive, and functional commercial space is built with environmentally responsible turnkey construction.

Complete services include design and engineering offering potential savings in construction costs over site-built buildings. Your complete facility will be built on our premises and is ready for immediate occupancy on your land within days. If you need, the entire modular building can be relocated to another site in the future.

Our personal service and professional staff will work with you to meet all your building needs. For an accurate advance estimate of the budget and time requirements of a modular solution, call today for more information.

"Without Modern Building Systems' outstanding management and competent, professional staff, it would not have been possible to consistently meet our tight budgets and limited schedule."

Reg Martinson, Director of Facilities
 Evergreen School District

Modern Building Systems, Inc.

800.682.1422

Visit us at:

www.mbs-modular.com

Oregon

**P.O. Box 110 9493 Porter Road
 Aumsville, OR 97325 USA**

tel: 503.749.4949

fax: 503.749.4950

Washington

**1550 Thornton Avenue SW
 Pacific, WA 98047 USA**

tel: 253.863.8863

fax: 253.863.8867

California

**605 Sutter Street
 West Sacramento, CA 95691 USA**

tel: 916.985.9852

fax: 912.985.9865