



MODERN BUILDING SYSTEMS, INC

"The Environmentally Smart Choice..."

Project Summary

Chehalem Glenn Golf Course

www.mbs-modular.com



Chehalem Glenn Golf Course is a nine-hole public golf facility in Newberg, Oregon. The owner was looking for a clubhouse and cart storage with maintenance space. **Modern Building Systems** designed two separate structures that were intended to complement one another. The clubhouse has a total of 2,520 square feet, including a 530 square foot pro shop and a spacious dining area. Built-in service counters for a more coordinated feel. The clubhouse has a full snack bar with a convenient walk-up window. A covered dining patio adds to the appeal of this cozy clubhouse.

The cart storage building includes ten individual "Cart Garages" with roll-up doors for storage of members' personal carts, as well as over 3,200 square feet of covered parking for the club's fleet. Each parking spot includes a recharging station to keep the carts running throughout the day. A service and repair shop, parts storage, and a private office for the Maintenance Manager put storage and maintenance under one convenient roof. The building is a floorless structure that sits on a concrete slab.

Chehalem Glenn Golf Course's clubhouse and cart storage building were designed to complement one another, and the custom awnings add a touch of professionalism to both buildings. Chehalem Glenn chose **Modern Building Systems** primarily due to their desire to minimize interruption to business.

When efficiency, quality, and flexibility are priorities for you and your business, **Modern Building Systems, Inc.** is *"The Environmentally Smart Choice..."*!

Features:

- Two separate but complementary buildings
- Clubhouse is stemwall while the floorless cart storage rests on a concrete slab
- Snack shop includes a walk-up window
- Minimum interruption with their business

**P.O. Box 110 9493 Porter Road
Aumsville, OR 97325 USA**

tel: 503.749.4949

fax: 503.749.4950

**1550 Thornton Avenue SW
Pacific, WA 98047 USA**

tel: 253.863.8863

fax: 253.863.8867

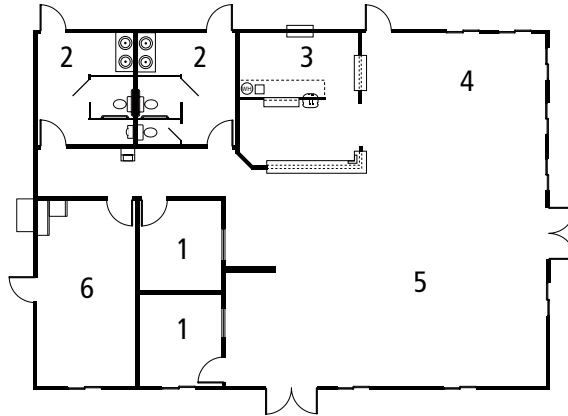
**605 Sutter Street
West Sacramento, CA 95691 USA**

tel: 916.985.9852

fax: 912.985.9865

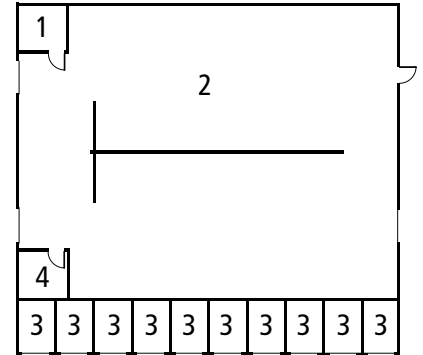
Clubhouse

1. Office
2. Restroom
3. Snack Bar
4. Dining Area
5. Proshop
6. Storage



Golf Cart Storage

1. Maintenance Office
2. Cart Storage
3. Private Storage
4. Storage



Modern Building Systems, Inc. Mobile and Modular Offices: Tomorrow's Solutions Today

When you consider the time, cost and flexibility your new building will involve consider **Modern Building Systems**.

We offer speed and efficiency for expansion or relocation and can build to compliment existing structures. Our economical, attractive, and functional commercial space is built with environmentally responsible turnkey construction.

Complete services include design and engineering offering potential savings in construction costs over site-built buildings. Your complete facility will be built on our premises and is ready for immediate occupancy on your land within days. If you need, the entire modular building can be relocated to another site in the future.

Our personal service and professional staff will work with you to meet all your building needs. For an accurate advance estimate of the budget and time requirements of a modular solution, call today for more information.

"Without Modern Building Systems' outstanding management and competent, professional staff, it would not have been possible to consistently meet our tight budgets and limited schedule."

Reg Martinson, Director of Facilities
 Evergreen School District

Modern Building Systems, Inc.

800.682.1422

Visit us at:
www.mbs-modular.com

Oregon

**P.O. Box 110 9493 Porter Road
 Aumsville, OR 97325 USA**

tel: 503.749.4949

fax: 503.749.4950

Washington

**1550 Thornton Avenue SW
 Pacific, WA 98047 USA**

tel: 253.863.8863

fax: 253.863.8867

California

**605 Sutter Street
 West Sacramento, CA 95691 USA**

tel: 916.985.9852

fax: 912.985.9865