



MODERN BUILDING SYSTEMS, INC

"The Environmentally Smart Choice..."

Project Summary

Cape Fox Lodge

www.mbs-modular.com



Cape Fox Lodge is located in Ketchikan, Alaska. this particular project was constructed in 1990 and features quality construction in a remote area.

Lodging facilities were constructed on the steep banks overlooking the scenic Tongass Narrows.

The modular hotel buildings were constructed to match the lodge structure and had a complete turn around time of four months, from start to finish.

The fast-track nature of this project, due to weather-related conditions and mountainside restrictions, made modular construction the ideal choice for the project. Modular construction allows for simultaneous activities to occur, i.e. site development and foundations are completed while the building is being constructed. This feature not only reduces the completion time, but also lessens the ill-effects of the weather that a typical construction project would encounter.

Interior finishes included carpeted floorings in the living areas, high performance vinyl clad wood windows, ceramic tile in the bathrooms, taped, textured and painted sheet rock, clear grain Douglas fir wood trim and marble trims in the bathrooms.

When you need efficiency, quality and flexibility - **Modern Building Systems** is the *"The Environmentally Smart Choice..."*.

Features:

- Two and three story facility
- High-performance windows
- Expensive location for site-built construction projects - remote area
- Environmentally friendly - less site impact and more efficient use of materials
- Higher quality for the price
- Control of cost overruns
- Buildings manufactured indoors

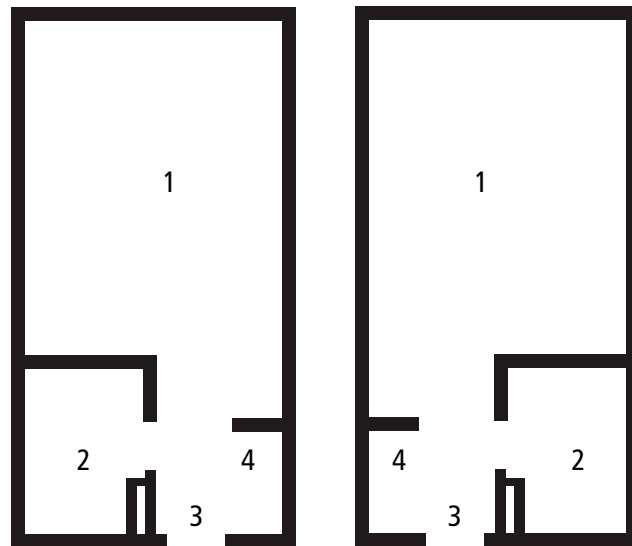
**P.O. Box 110 9493 Porter Road
Aumsville, OR 97325 USA
tel: 503.749.4949
fax: 503.749.4950**

**1550 Thornton Avenue SW
Pacific, WA 98047 USA
tel: 253.863.8863
fax: 253.863.8867**

**605 Sutter Street
West Sacramento, CA 95691 USA
tel: 916.985.9852
fax: 916.985.9865**

Westmark Cape Fox Lodge
72 rooms & suites

1. Bedroom
2. Bathroom
3. Entry
4. Closet



www.mbs-modular.com

Modern Building Systems, Inc. Mobile and Modular Offices: Tomorrow's Solutions Today

When you consider the time, cost and flexibility your new building will involve consider **Modern Building Systems**.

We offer speed and efficiency for expansion or relocation and can build to compliment existing structures. Our economical, attractive, and functional commercial space is built with environmentally responsible turnkey construction.

Complete services include design and engineering offering potential savings in construction costs over site-built buildings. Your complete facility will be built on our premises and is ready for immediate occupancy on your land within days. If you need, the entire modular building can be relocated to another site in the future.

Our personal service and professional staff will work with you to meet all your building needs. For an accurate advance estimate of the budget and time requirements of a modular solution, call today for more information.

"Without Modern Building Systems' outstanding management and competent, professional staff, it would not have been possible to consistently meet our tight budgets and limited schedule."

Reg Martinson, Director of Facilities
 Evergreen School District

Modern Building Systems, Inc.

800.682.1422

Visit us at:
www.mbs-modular.com

Oregon

P.O. Box 110 9493 Porter Road
Aumsville, OR 97325 USA

tel: 503.749.4949

fax: 503.749.4950

Washington

1550 Thornton Avenue SW
Pacific, WA 98047 USA

tel: 253.863.8863

fax: 253.863.8867

California

605 Sutter Street
West Sacramento, CA 95691 USA

tel: 916.985.9852

fax: 912.985.9865