

# PORT TOWNSEND SCHOOL DISTRICT



**MODERN BUILDING SYSTEMS, INC.**

*"The Environmentally Smart Choice..."*

## PROJECT SUMMARY



Port Townsend is a small, quiet community located in the Pacific Northwest. With its spectacular views of the Puget Sound, town values and traditions, and smaller size, it is no wonder that the secret of the town was leaked and population exploded in 2009. There was suddenly a need for affordable, practical, durable and permanent classroom space.

Moving away from the traditional portable classroom look, which was met with some resistance from the public, we proposed an addition to their school that was aesthetically pleasing, highly functional and cost-effective. Once the project was assigned to Modern Building Systems' high-quality design team, they took it upon themselves to develop an affordable school addition, with all of the benefits of a portable classroom and solving the community's complex challenge.

Once approved and supported by the school district and community, Modern went to work. We created a four-classroom addition to be delivered and set on a permanent foundation. Using the highest quality exterior materials and the expertise of our professional installation crew, Modern was able to solve the district's problem in a timely manner, while satisfying the communities long-term need for eye-catching classroom space.

We are **"The Environmentally Smart Choice..."** for all your building needs. Contact us today to learn more.

## FEATURES:

- Durable
- Affordable
- Aesthetically pleasing
- Community-endorsed
- High-quality





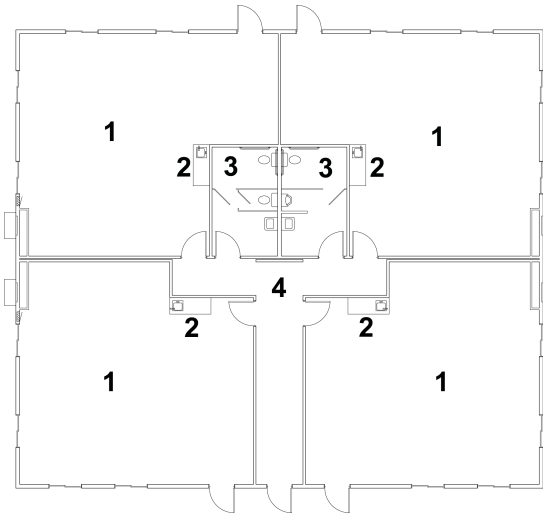
# PORT TOWNSEND SCHOOL DISTRICT

**MODERN BUILDING SYSTEMS, INC.**

*"The Environmentally Smart Choice..."*

## Port Townsend School District

- 1 Classroom
- 2 Sink Area
- 3 Restroom
- 4 Hallway



## QUALITY IS OUR FUTURE. AND YOURS.

What makes Modern special? Simply put, **it's our team.**

**Our people are the difference. They produce a quality of product that's simply unmatched in the modular industry. Since December 6, 1971, our team has been passionate about what we build and how we put it all together.** Our strength is our longevity. And that strength and commitment to quality is why we'll be around for a long time to come, making sure our customers enjoy the best quality products at the most competitive prices.

**We're the oldest commercial modular building company on the West Coast. Modern is 130 team members strong – and we're growing.** We're a family owned and operated business, started by Don Rasmussen and carried on by his sons, Jim and Ken Rasmussen.

Our company is a design-and-build manufacturer, constructing everything from offices, medical building and classrooms – essentially anything but residential. **We've worked for government agencies across the country, built a blast-proof flight simulator for Boeing and constructed a four-story building at the Red Dog Mine near the Arctic Circle.**

**Our modular construction offers significant savings over traditional, site-built construction.** Our structures are factory-built, allowing construction to occur during any season, and installed quickly, saving time and reducing costs. We lease and sell temporary job-site trailers, mobile sales offices, construction-site offices, portable classrooms, complete schools, modular offices, medical clinics, modular daycare facilities, relocatable buildings, restroom/shower trailers and prefabricated buildings. We have our own fleet of delivery trucks, and maintain our own installation crews, equipment and service departments, so we're 100% responsible for our work.

**We pride ourselves on being the number one choice for top-quality, environmentally friendly buildings at very competitive prices, with no dealer-reseller mark-ups. Our goal is your satisfaction – and making sure your needs have been met and exceeded.** Call us today for more information.

### TESTIMONIALS

What our clients have to say:

*"It has been a pleasure to conduct business with your company. All of the representatives from your company, including receptionists, installers, and traffic engineer have provided excellent customer service."*

*–Administrative Services Supervisor  
Albany Police Department*

## CONTACT US TODAY

### Oregon

P.O. Box 110 9493 Porter Road  
Aumsville, OR 97325 USA  
Phone: 503.749.4949  
Fax: 503.749.4950

### Washington

1550 Thornton Avenue SW  
Pacific, WA 98047 USA  
Phone: 253.863.8863  
Fax: 253.863.8867

### California

605 Sutter Street  
West Sacramento, CA 95691 USA  
Phone: 916.985.9852  
Fax: 912.985.9865