



# ORCHARDS ELEMENTARY SCHOOL

**MODERN BUILDING SYSTEMS, INC.**

*"The Environmentally Smart Choice..."*

## PROJECT SUMMARY



Modern constructed this 4,752-square-foot preschool facility for Orchard Elementary School in Evergreen School District in Vancouver, Washington. The structure includes four classrooms, each with built-in tack boards and countertops with sinks; five restrooms, one connected to each classroom, as well as one accessible from the hall; two offices; one kitchen complete with both a stove and a sink; a janitorial room; and a storage room.

The permanent building sits on a concrete stem-wall foundation. It is covered in lap siding and has gutters and downspouts, with architectural-grade roofing. The preschool is also furnished with fire extinguishers.

The preschool at Orchard Elementary is one of many buildings constructed by Modern Building Systems for Evergreen School District. The district was so pleased with Modern's quality in our previous work and our professional staff that they joined the ranks as one of Modern's many repeat customers.

Evergreen School District first came to Modern Building Systems in search of a quality, affordable, expeditious way to get the buildings they needed to house their students. This specific preschool was built to house a growing school program that needed space to expand.

We are **"The Environmentally Smart Choice..."** for all your building needs. Contact us today to learn more.

### FEATURES:

- Tight timelines for completion
- Furnished with fire extinguishers
- Restroom attached to each classroom
- Environmentally friendly—less site impact and more efficient use of materials
- High-quality architectural roofing





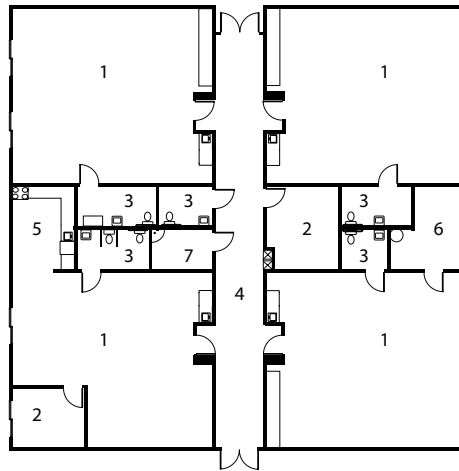
# ORCHARDS ELEMENTARY SCHOOL

**MODERN BUILDING SYSTEMS, INC.**

*"The Environmentally Smart Choice..."*

## Orchards Elementary School

- 1 Classroom
- 2 Office
- 3 Restroom
- 4 Corridor
- 5 Kitchen
- 6 Storage
- 7 Janitorial Closet



## QUALITY IS OUR FUTURE. AND YOURS.

What makes Modern special? Simply put, **it's our team.**

**Our people are the difference. They produce a quality product that's simply unmatched in the modular industry. Since December 6, 1971, our team has been passionate about what we build and how we put it all together.** Our strength, experience and commitment to quality is why we'll be around for a long time to come, making sure our customers enjoy the best quality products at the most competitive prices.

**We're the oldest commercial modular building company on the West Coast. Modern is 130 team members strong – and we're growing.** We're a family owned and operated business, started by Don Rasmussen and carried on by his sons, Jim and Ken Rasmussen.

Our company is a design-and-build manufacturer, constructing everything from offices, medical building and classrooms – essentially anything but residential. **We've worked for government agencies across the country, built a blast-proof flight simulator for Boeing and constructed a four-story building at the Red Dog Mine near the Arctic Circle.**

**Our modular construction offers significant savings over traditional, site-built construction.** Our structures are factory-built, allowing construction to occur during any season, and installed quickly, saving time and reducing costs. We lease and sell temporary job-site trailers, mobile sales offices, construction-site offices, portable classrooms, complete schools, modular offices, medical clinics, modular daycare facilities, relocatable buildings, restroom/shower trailers and prefabricated buildings. We have our own fleet of delivery trucks, and maintain our own installation crews, equipment and service departments, so we're 100% responsible for our work.

**We pride ourselves on being the number one choice for top-quality, environmentally friendly buildings at very competitive prices, with no dealer-reseller mark-ups. Our goal is your satisfaction – and making sure your needs have been met and exceeded.** Call us today for more information.

### TESTIMONIALS

What our clients have to say:

*"We would like to thank you personally for your generous gift of company time, materials and construction of this beautiful addition to the entrance of our school!"*

*-Arlene Walker,  
Structured Work Experience  
Specialist  
Woodburn High Campus*

## CONTACT US TODAY

### Oregon

P.O. Box 110 9493 Porter Road  
Aumsville, OR 97325 USA  
Phone: 503.749.4949  
Fax: 503.749.4950

### Washington

1550 Thornton Avenue SW  
Pacific, WA 98047 USA  
Phone: 253.863.8863  
Fax: 253.863.8867

### California

605 Sutter Street  
West Sacramento, CA 95691 USA  
Phone: 916.985.9852  
Fax: 912.985.9865