



MODERN BUILDING SYSTEMS, INC.
"The Environmentally Smart Choice..."

OHSU MRI FACILITY

PROJECT SUMMARY



Built at our plant in Aumsville, Oregon, this building was brought to the site, crane-lifted and installed.

The full turnkey construction project included permits, site preparation, concrete walkways, stairs, handicap accessible ramps, alarms, utility extensions and connections

The stem-wall foundation, located on a hillside, had to include a large concrete pad to minimize vibration and accommodate the installation and operation of the MRI. In addition, the roof of the building had to be hatched. This was to allow for lifting and placing the multi-million dollar MRI equipment onto the concrete pad. The magnet for the MRI weighs 28,600 pounds and is the latest and most sophisticated MRI in Oregon.

In the MRI room, a lining of special one-foot-thick steel plating with structural tube columns and copper shielding was installed to walls, floors, and ceilings to protect the magnetic fields from outside radio frequencies in order to enhance high resolutions.

The chilled water-cooling system for the MRI equipment was factory-installed. A main concern for the customer was to have the facility blend in with the other structures on the campus. An environmentally friendly paneled siding was chosen and the walls are one-hour fire rated. The dormer entry was factory-built as a part of the roof structure. All interior finishes are medical-grade, such as stainless-steel cabinets and vinyl flooring.

We are "The Environmentally Smart Choice..." for all your building needs. Contact us today to learn more.

FEATURES:

- Complete turnkey project
- Stem-wall foundation on hillside, including MRI pad
- Chilled water system for MRI
- Dormered entry as part of roof
- One-hour fire rated construction
- Stainless-steel cabinets





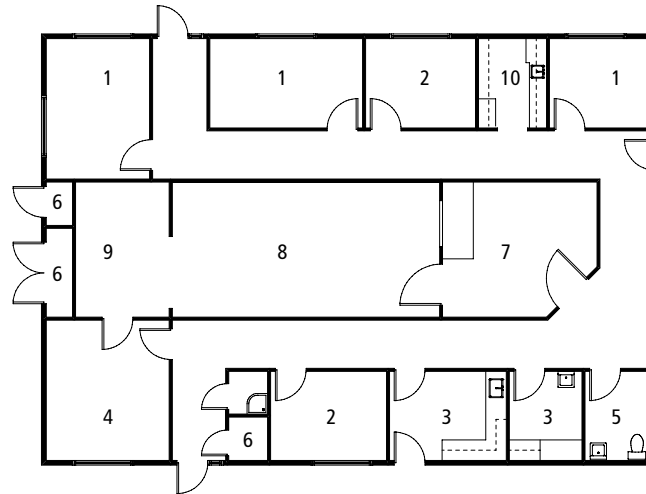
OHSU MRI FACILITY

MODERN BUILDING SYSTEMS, INC.

"The Environmentally Smart Choice..."

OHSU MRI Facility

- 1 Office
- 2 Work Room
- 3 Patient Preparation
- 4 Image Processing
- 5 Restrooms
- 6 Storage/Mechanical
- 7 Control Room
- 8 MRI
- 9 Equipment
- 10 Copy Room



QUALITY IS OUR FUTURE. AND YOURS.

What makes Modern special? Simply put, **it's our team.**

Our people are the difference. They produce a quality product that's simply unmatched in the modular industry. Since December 6, 1971, our team has been passionate about what we build and how we put it all together. Our strength, experience and commitment to quality is why we'll be around for a long time to come, making sure our customers enjoy the best quality products at the most competitive prices.

We're the oldest commercial modular building company on the West Coast. Modern is 130 team members strong – and we're growing. We're a family owned and operated business, started by Don Rasmussen and carried on by his sons, Jim and Ken Rasmussen.

Our company is a design-and-build manufacturer, constructing everything from offices, medical building and classrooms – essentially anything but residential. **We've worked for government agencies across the country, built a blast-proof flight simulator for Boeing and constructed a four-story building at the Red Dog Mine near the Arctic Circle.**

Our modular construction offers significant savings over traditional, site-built construction. Our structures are factory-built, allowing construction to occur during any season, and installed quickly, saving time and reducing costs. We lease and sell temporary job-site trailers, mobile sales offices, construction-site offices, portable classrooms, complete schools, modular offices, medical clinics, modular daycare facilities, relocatable buildings, restroom/shower trailers and prefabricated buildings. We have our own fleet of delivery trucks, and maintain our own installation crews, equipment and service departments, so we're 100% responsible for our work.

We pride ourselves on being the number one choice for top-quality, environmentally friendly buildings at very competitive prices, with no dealer-reseller mark-ups. Our goal is your satisfaction – and making sure your needs have been met and exceeded. Call us today for more information.

TESTIMONIALS

What our clients have to say:

"Modular buildings are fantastic. As soon as I can I'm going to build another. I can't understand why more people aren't building modular."

*–Jim Aydelott
Symantec Corporation,
Operations Manager
Seattle Daily Journal of Commerce*

CONTACT US TODAY

Oregon

P.O. Box 110 9493 Porter Road
Aumsville, OR 97325 USA
Phone: 503.749.4949
Fax: 503.749.4950

Washington

1550 Thornton Avenue SW
Pacific, WA 98047 USA
Phone: 253.863.8863
Fax: 253.863.8867

California

605 Sutter Street
West Sacramento, CA 95691 USA
Phone: 916.985.9852
Fax: 912.985.9865