



MODERN BUILDING SYSTEMS, INC.

"The Environmentally Smart Choice..."

HOME CHOICE ACADEMY

PROJECT SUMMARY



Home Choice Academy is one of the many facilities Modern Building Systems has built for Evergreen School District, located in Vancouver, Wash. This 16-module, 13,290-square-foot building combines classroom, office, and administrative space for the school district. Used by approximately 200 students per day, this school building has six miles of data cabling installed.

A special challenge was to accommodate dual uses for the facility. The school district is housing their internet academy in this building, which is used by senior high-school students throughout the district, as well as their Home Choice Academy, which allows part-time schooling and provides certain classes for home-schooled students.

Each module was crane-lifted and set onto a stem wall foundation. The building has a site-built, 4-in-12 pitch roof system. This way, Modern Building Systems was able to create an attractive, exterior look with different roof lines.

The building has a factory-installed fire sprinkler system and all site utility connections were handled by Modern. The central heating system is supported by a split system that includes pad-mounted compressors and attic-mounted air handlers.

We are *"The Environmentally Smart Choice..."* for all your building needs. Contact us today to learn more.

FEATURES:

- Combined classroom and administrative space
- Dual-use facility: Internet Academy and Home Choice Academy
- Site-built roof system, different roof lines
- Crane-set
- Pad-mounted heat pumps





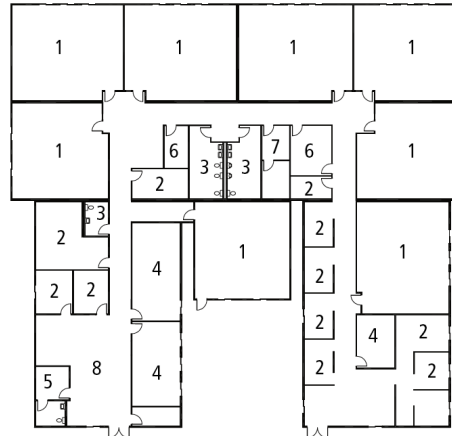
HOME CHOICE ACADEMY

MODERN BUILDING SYSTEMS, INC.

"The Environmentally Smart Choice..."

Home Choice Academy

- 1 Classroom
- 2 Office
- 3 Restroom
- 4 Conference Room
- 5 Health Room
- 6 Multi-Purpose Room
- 7 Janitorial
- 8 Reception



QUALITY IS OUR FUTURE. AND YOURS.

What makes Modern special? Simply put, **it's our team.**

Our people are the difference. They produce a quality product that's simply unmatched in the modular industry. Since December 6, 1971, our team has been passionate about what we build and how we put it all together. Our strength, experience and commitment to quality is why we'll be around for a long time to come, making sure our customers enjoy the best quality products at the most competitive prices.

We're the oldest commercial modular building company on the West Coast. Modern is 130 team members strong – and we're growing. We're a family owned and operated business, started by Don Rasmussen and carried on by his sons, Jim and Ken Rasmussen.

Our company is a design-and-build manufacturer, constructing everything from offices, medical building and classrooms – essentially anything but residential. **We've worked for government agencies across the country, built a blast-proof flight simulator for Boeing and constructed a four-story building at the Red Dog Mine near the Arctic Circle.**

Our modular construction offers significant savings over traditional, site-built construction. Our structures are factory-built, allowing construction to occur during any season, and installed quickly, saving time and reducing costs. We lease and sell temporary job-site trailers, mobile sales offices, construction-site offices, portable classrooms, complete schools, modular offices, medical clinics, modular daycare facilities, relocatable buildings, restroom/shower trailers and prefabricated buildings. We have our own fleet of delivery trucks, and maintain our own installation crews, equipment and service departments, so we're 100% responsible for our work.

We pride ourselves on being the number one choice for top-quality, environmentally friendly buildings at very competitive prices, with no dealer-reseller mark-ups. Our goal is your satisfaction – and making sure your needs have been met and exceeded. Call us today for more information.

TESTIMONIALS

What our clients have to say:

"We would like to thank you personally for your generous gift of company time, materials and construction of this beautiful addition to the entrance of our school!"

*-Arlene Walker,
Structured Work Experience
Specialist
Woodburn High Campus*

CONTACT US TODAY

Oregon

P.O. Box 110 9493 Porter Road
Aumsville, OR 97325 USA
Phone: 503.749.4949
Fax: 503.749.4950

Washington

1550 Thornton Avenue SW
Pacific, WA 98047 USA
Phone: 253.863.8863
Fax: 253.863.8867

California

605 Sutter Street
West Sacramento, CA 95691 USA
Phone: 916.985.9852
Fax: 912.985.9865