

GRANDVIEW SCHOOL DISTRICT



MODERN BUILDING SYSTEMS, INC.

"The Environmentally Smart Choice..."

PROJECT SUMMARY



Located in the southern area of eastern Washington near the Columbia Gorge, Grandview School District was in the process of completely renovating space in two of their schools and needed to house students while this lengthy project ensued.

The modules were shipped to the site and then the interior corridor for this project was constructed on-site using pre-cut wall, roof truss and floor assemblies. The corridor had to be site-constructed due to transportation limits on length and height.

Building a spacious corridor not only allowed for easy movement of children as they passed from class to class, but also facilitated space for heat/air conditioning ducting, fire sprinkler piping and phone/data wiring to be routed above the suspended ceiling.

Utilizing modular construction for some of the new space required for this school gave more time to complete the site-built portion of this project without sacrificing school days while construction ensued.

To ensure that this modular space tied in with the new site-built space being constructed, the same finishes were used. Quality finishes included custom wallpaper on interior walls, custom-built casework, cherry-laminated interior doors with welded frames and re-lites, and solid plastic partitions in restrooms.

We are *"The Environmentally Smart Choice..."* for all your building needs. Contact us today to learn more.

FEATURES:

- Finishes to match new construction
- Cement fibrous lap siding
- Custom-built plastic laminate shelving and cabinetry
- Tight timelines for completion





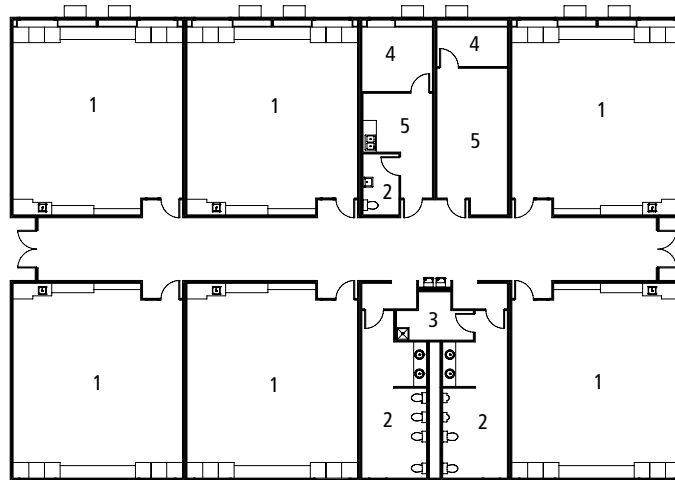
GRANDVIEW SCHOOL DISTRICT

MODERN BUILDING SYSTEMS, INC.

"The Environmentally Smart Choice..."

Grandview School District

- 1 Classroom
- 2 Restrooms
- 3 Storage
- 4 Office
- 5 Workroom



QUALITY IS OUR FUTURE. AND YOURS.

What makes Modern special? Simply put, **it's our team.**

Our people are the difference. They produce a quality product that's simply unmatched in the modular industry. Since December 6, 1971, our team has been passionate about what we build and how we put it all together. Our strength, experience and commitment to quality is why we'll be around for a long time to come, making sure our customers enjoy the best quality products at the most competitive prices.

We're the oldest commercial modular building company on the West Coast. Modern is 130 team members strong – and we're growing. We're a family owned and operated business, started by Don Rasmussen and carried on by his sons, Jim and Ken Rasmussen.

Our company is a design-and-build manufacturer, constructing everything from offices, medical building and classrooms – essentially anything but residential. **We've worked for government agencies across the country, built a blast-proof flight simulator for Boeing and constructed a four-story building at the Red Dog Mine near the Arctic Circle.**

Our modular construction offers significant savings over traditional, site-built construction. Our structures are factory-built, allowing construction to occur during any season, and installed quickly, saving time and reducing costs. We lease and sell temporary job-site trailers, mobile sales offices, construction-site offices, portable classrooms, complete schools, modular offices, medical clinics, modular daycare facilities, relocatable buildings, restroom/shower trailers and prefabricated buildings. We have our own fleet of delivery trucks, and maintain our own installation crews, equipment and service departments, so we're 100% responsible for our work.

We pride ourselves on being the number one choice for top-quality, environmentally friendly buildings at very competitive prices, with no dealer-reseller mark-ups. Our goal is your satisfaction – and making sure your needs have been met and exceeded. Call us today for more information.

TESTIMONIALS

What our clients have to say:

"We would like to thank you personally for your generous gift of company time, materials and construction of this beautiful addition to the entrance of our school!"

*-Arlene Walker,
Structured Work Experience
Specialist
Woodburn High Campus*

CONTACT US TODAY

Oregon

P.O. Box 110 9493 Porter Road
Aumsville, OR 97325 USA
Phone: 503.749.4949
Fax: 503.749.4950

Washington

1550 Thornton Avenue SW
Pacific, WA 98047 USA
Phone: 253.863.8863
Fax: 253.863.8867

California

605 Sutter Street
West Sacramento, CA 95691 USA
Phone: 916.985.9852
Fax: 912.985.9865