



GAS & CONVENIENCE STORES

MODERN BUILDING SYSTEMS, INC.

"The Environmentally Smart Choice..."

PROJECT SUMMARY



The Texaco Convenience Store was constructed in 1994 in Salem, Oregon.

The Shell Gas Station was built in 1995 in Lake Oswego, Oregon.

Modern has constructed many convenience stores at various locations throughout the Pacific Northwest. These particular projects required a custom design to allow the customer to meet specific corporate guidelines. These stores needed to match other stores, as well as blend with the surrounding areas and architectural decor. Large store-front windows allow for high visibility of pumps and gives customers an inside view of the products available in the store.

Modern Building Systems' modular buildings eliminate extra expenses by bringing fewer people and less equipment to the jobsite. Costs can be high when you consider the long-term on-site work crews needed for stick-built construction due to phasing the installation of underground tanks, foundations and, finally, the building.

With a modular facility, some of this additional time and cost is virtually eliminated. Only the final phases of building construction are completed on the jobsite – and this is accomplished within a matter of days. You pay the lower price for "true-cost" construction.

Discover how convenient and cost-effective a modular convenience store can be with Modern Building Systems.

We are **"The Environmentally Smart Choice..."** for all your building needs. Contact us today to learn more.

FEATURES:

- Minimum site impact
- Designed to allow for customer to meet specific corporate guidelines
- Maximized the size of the convenience store to fit the site
- Low maintenance steel siding use of materials
- Quick turnaround time of project to meet opening date



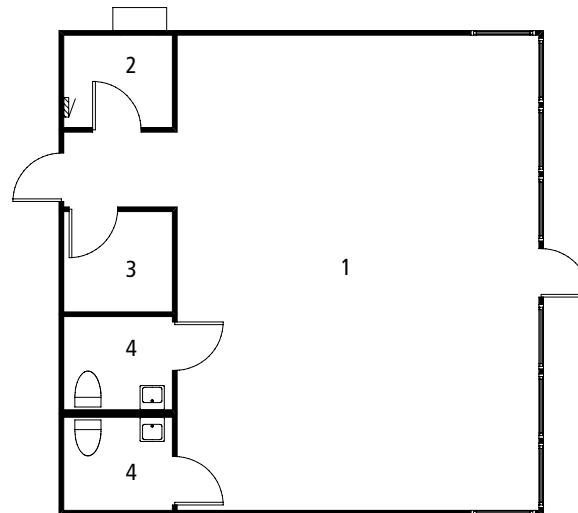


MODERN BUILDING SYSTEMS, INC.
"The Environmentally Smart Choice..."

TEXACO

Texaco Gas Station -
Food Mart

- 1 Retail
- 2 Office
- 3 Storage
- 4 Restrooms



QUALITY IS OUR FUTURE. AND YOURS.

What makes Modern special? Simply put, **it's our team.**

Our people are the difference. They produce a quality product that's simply unmatched in the modular industry. Since December 6, 1971, our team has been passionate about what we build and how we put it all together. Our strength, experience and commitment to quality is why we'll be around for a long time to come, making sure our customers enjoy the best quality products at the most competitive prices.

We're the oldest commercial modular building company on the West Coast. Modern is 130 team members strong – and we're growing. We're a family owned and operated business, started by Don Rasmussen and carried on by his sons, Jim and Ken Rasmussen.

Our company is a design-and-build manufacturer, constructing everything from offices, medical building and classrooms – essentially anything but residential. **We've worked for government agencies across the country, built a blast-proof flight simulator for Boeing and constructed a four-story building at the Red Dog Mine near the Arctic Circle.**

Our modular construction offers significant savings over traditional, site-built construction. Our structures are factory-built, allowing construction to occur during any season, and installed quickly, saving time and reducing costs. We lease and sell temporary job-site trailers, mobile sales offices, construction-site offices, portable classrooms, complete schools, modular offices, medical clinics, modular daycare facilities, relocatable buildings, restroom/shower trailers and prefabricated buildings. We have our own fleet of delivery trucks, and maintain our own installation crews, equipment and service departments, so we're 100% responsible for our work.

We pride ourselves on being the number one choice for top-quality, environmentally friendly buildings at very competitive prices, with no dealer-reseller mark-ups. Our goal is your satisfaction – and making sure your needs have been met and exceeded. Call us today for more information.

TESTIMONIALS

What our clients have to say:

"Modular buildings are fantastic. As soon as I can I'm going to build another. I can't understand why more people aren't building modular."

*–Jim Aydelott
Symantec Corporation,
Operations Manager
Seattle Daily Journal of Commerce*

CONTACT US TODAY

Oregon

P.O. Box 110 9493 Porter Road
Aumsville, OR 97325 USA
Phone: 503.749.4949
Fax: 503.749.4950

Washington

1550 Thornton Avenue SW
Pacific, WA 98047 USA
Phone: 253.863.8863
Fax: 253.863.8867

California

605 Sutter Street
West Sacramento, CA 95691 USA
Phone: 916.985.9852
Fax: 912.985.9865