

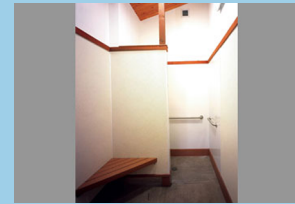


MODERN BUILDING SYSTEMS, INC.

"The Environmentally Smart Choice..."

FORT STEVENS

PROJECT SUMMARY



Located outside Astoria on the Northern Oregon Coast, Fort Stevens is a public restroom/shower facility that was constructed for the State of Oregon Parks & Recreation Department.

Site constraints into the park made modular construction the perfect solution for this state-protected site. Modulares were shipped complete with cement floors and all fixtures installed at the manufacturing facility.

Completing as much work as possible at the manufacturing plant eliminated multiple vehicles and crews at the campground. Site utilities were installed while the building was being constructed at the manufacturing plant to minimize the overall time at the site.

Stainless-steel items were installed throughout the building to eliminate rust in this salty coastal environment.

Keeping power consumption to a minimum was facilitated by installing occupancy sensors and sensor controls for lighting and fans. High-efficiency gas boilers for hot water heaters and re-circulation system with expansion tanks were used on all water piping at Fort Stevens.

To help increase the longevity of the building, vandal-proof fixtures were installed throughout the building from shower fixtures to toilet partitions.

Tongue-and-groove 2-x-6 exposed interior roof decking, cement fibre board-and-batt siding with brick wainscoting and standing seam metal roofing were just a few of the finishes used.

We are *"The Environmentally Smart Choice..."* for all your building needs. Contact us today to learn more.

FEATURES:

- Pre-formed/poured cement floor
- Complete building shipped to minimize site damage
- Rust-resistant finishes
- Concurrent construction
- Sturdy finishes for durability





FORT STEVENS

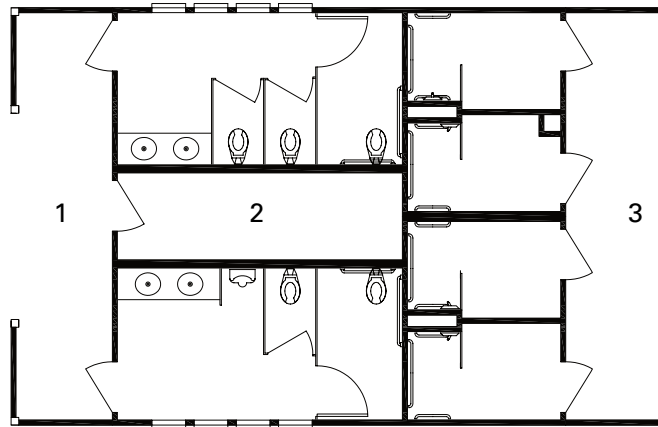
MODERN BUILDING SYSTEMS, INC.
"The Environmentally Smart Choice..."

Fort Stevens

1 Open Area

2 Restrooms

3 Showers



QUALITY IS OUR FUTURE. AND YOURS.

What makes Modern special? Simply put, **it's our team.**

Our people are the difference. They produce a quality of product that's simply unmatched in the modular industry. Since December 6, 1971, our team has been passionate about what we build and how we put it all together. Our strength is our longevity. And that strength and commitment to quality is why we'll be around for a long time to come, making sure our customers enjoy the best quality products at the most competitive prices.

We're the oldest commercial modular building company on the West Coast. Modern is 130 team members strong – and we're growing. We're a family owned and operated business, started by Don Rasmussen and carried on by his sons, Jim and Ken Rasmussen.

Our company is a design-and-build manufacturer, constructing everything from offices, medical building and classrooms – essentially anything but residential. **We've worked for government agencies across the country, built a blast-proof flight simulator for Boeing and constructed a four-story building at the Red Dog Mine near the Arctic Circle.**

Our modular construction offers significant savings over traditional, site-built construction. Our structures are factory-built, allowing construction to occur during any season, and installed quickly, saving time and reducing costs. We lease and sell temporary job-site trailers, mobile sales offices, construction-site offices, portable classrooms, complete schools, modular offices, medical clinics, modular daycare facilities, relocatable buildings, restroom/shower trailers and prefabricated buildings. We have our own fleet of delivery trucks, and maintain our own installation crews, equipment and service departments, so we're 100% responsible for our work.

We pride ourselves on being the number one choice for top-quality, environmentally friendly buildings at very competitive prices, with no dealer-reseller mark-ups. Our goal is your satisfaction – and making sure your needs have been met and exceeded. Call us today for more information.

TESTIMONIALS

What our clients have to say:

"Modular buildings are fantastic. As soon as I can I'm going to build another. I can't understand why more people aren't building modular."

–Jim Aydelott
Symantec Corporation,
Operations Manager
Seattle Daily Journal of
Commerce

CONTACT US TODAY

Oregon

P.O. Box 110 9493 Porter Road
Aumsville, OR 97325 USA
Phone: 503.749.4949
Fax: 503.749.4950

Washington

1550 Thornton Avenue SW
Pacific, WA 98047 USA
Phone: 253.863.8863
Fax: 253.863.8867

California

605 Sutter Street
West Sacramento, CA 95691 USA
Phone: 916.985.9852
Fax: 916.985.9865