



MODERN BUILDING SYSTEMS, INC.

"The Environmentally Smart Choice..."

CAPE FOX LODGE

PROJECT SUMMARY



Constructed in 1990, Cape Fox Lodge features quality construction in a remote area.

Lodging facilities were constructed on the steep banks overlooking the scenic Tongass Narrows.

The modular hotel buildings were constructed to match the lodge structure and had a complete turn around time of four months, from start to finish.

The fast-track nature of this project, due to weather-related conditions and mountainside restrictions, made modular construction the ideal choice for the project. Modular construction allows for simultaneous activities to occur, i.e. site development and foundations are completed while the building is being constructed. This feature not only reduces the completion time, but also lessens the ill-effects of the weather that a typical construction project would encounter.

Interior finishes included carpeted floorings in the living areas, high performance vinyl-clad wood windows, ceramic tile in the bathrooms, taped, textured and painted sheet rock, clear grain Douglas fir wood trim and marble trims in the bathrooms.

We are *"The Environmentally Smart Choice..."* for all your building needs. Contact us today to learn more.

FEATURES:

- Two and three story facility
- High-performance windows
- Higher quality for the price
- Control of cost overruns
- Buildings manufactured indoors



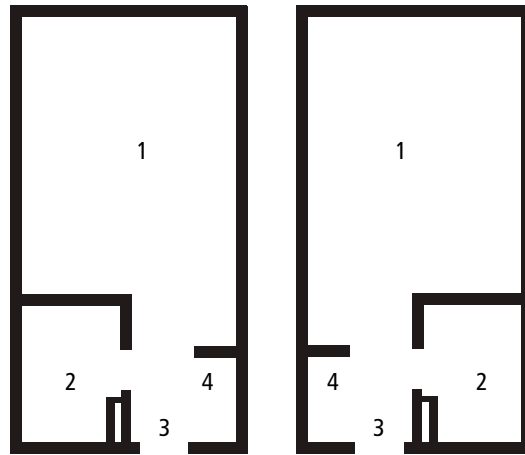


CAPE FOX LODGE

MODERN BUILDING SYSTEMS, INC.
"The Environmentally Smart Choice..."

Westmark Cape Fox Lodge
72 rooms & suites

- 1 Bedroom
- 2 Bathroom
- 3 Entry
- 3 Closet



QUALITY IS OUR FUTURE. AND YOURS.

What makes Modern special? Simply put, **it's our team.**

Our people are the difference. They produce a quality of product that's simply unmatched in the modular industry. Since December 6, 1971, our team has been passionate about what we build and how we put it all together. Our strength is our longevity. And that strength and commitment to quality is why we'll be around for a long time to come, making sure our customers enjoy the best quality products at the most competitive prices.

We're the oldest commercial modular building company on the West Coast. Modern is 130 team members strong – and we're growing. We're a family owned and operated business, started by Don Rasmussen and carried on by his sons, Jim and Ken Rasmussen.

Our company is a design-and-build manufacturer, constructing everything from offices, medical building and classrooms – essentially anything but residential. **We've worked for government agencies across the country, built a blast-proof flight simulator for Boeing and constructed a four-story building at the Red Dog Mine near the Arctic Circle.**

Our modular construction offers significant savings over traditional, site-built construction. Our structures are factory-built, allowing construction to occur during any season, and installed quickly, saving time and reducing costs. We lease and sell temporary job-site trailers, mobile sales offices, construction-site offices, portable classrooms, complete schools, modular offices, medical clinics, modular daycare facilities, relocatable buildings, restroom/shower trailers and prefabricated buildings. We have our own fleet of delivery trucks, and maintain our own installation crews, equipment and service departments, so we're 100% responsible for our work.

We pride ourselves on being the number one choice for top-quality, environmentally friendly buildings at very competitive prices, with no dealer-reseller mark-ups. Our goal is your satisfaction – and making sure your needs have been met and exceeded. Call us today for more information.

TESTIMONIALS

What our clients have to say:

"Modular buildings are fantastic. As soon as I can I'm going to build another. I can't understand why more people aren't building modular."

–Jim Aydelott
Symantec Corporation,
Operations Manager
Seattle Daily Journal of
Commerce

CONTACT US TODAY

Oregon

P.O. Box 110 9493 Porter Road
Aumsville, OR 97325 USA
Phone: 503.749.4949
Fax: 503.749.4950

Washington

1550 Thornton Avenue SW
Pacific, WA 98047 USA
Phone: 253.863.8863
Fax: 253.863.8867

California

605 Sutter Street
West Sacramento, CA 95691 USA
Phone: 916.985.9852
Fax: 916.985.9865