



BETHEL SCHOOL DISTRICT

MODERN BUILDING SYSTEMS, INC.

"The Environmentally Smart Choice..."

PROJECT SUMMARY



Bethel School District, located in the South Sound region of Washington, has experienced a tremendous amount of growth in recent years. With all of its needed expansion, the district even outgrew their construction management office space and needed a quick solution to the problem.

Modular construction offered a quick solution and the flexibility to add more buildings as needed. Modern Building Systems constructed two 28-by-66-foot modular office buildings that were joined by a common breezeway, which leads to the main administration offices on site. Modular construction allowed for the buildings to be constructed off-site and installed over the winter break to minimize disruption of the district offices. This allowed the buildings to be ready for occupancy after the break.

As the district reviewed long-range forecasting, they identified the need for an additional building, but also needed a classroom for the elementary next door. Modern Building Systems constructed a classroom for the needs of the elementary school. At the end of the school year, a second portable was installed with a common breezeway to match the previous building. A covered walkway joined the two buildings. A Mitsubishi heat system was installed in both buildings, allowing each office occupant to meet their own comfort needs. Solid core doors and wood window surrounds, along with a tape-and-texture finish, provided a warm, professional office appearance.

Over the two-year time frame, the district used the buildings to relieve their office needs, utilized a building for a much needed classroom and added the fourth building to complete the complex. The Bethel School District selected *"The Environmentally Smart Choice..."* by choosing Modern Building Systems.

FEATURES:

- Individually controlled HVAC system
- Tight timelines for completion
- Minimal site disruption
- Flexibility to add as needed
- Buildings for different uses





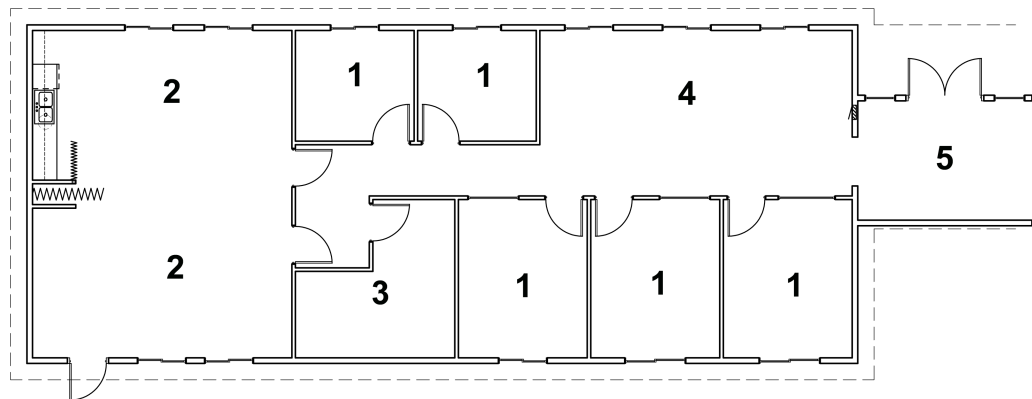
BETHEL SCHOOL DISTRICT

MODERN BUILDING SYSTEMS, INC.

"The Environmentally Smart Choice..."

Bethel School Dist.
Modular School

- 1 Classrooms
- 2 Restrooms
- 3 Administration
- 4 Staff Room
- 5 Storage



QUALITY IS OUR FUTURE. AND YOURS.

What makes Modern special? Simply put, **it's our team.**

Our people are the difference. They produce a quality product that's simply unmatched in the modular industry. Since December 6, 1971, our team has been passionate about what we build and how we put it all together. Our strength, experience and commitment to quality is why we'll be around for a long time to come, making sure our customers enjoy the best quality products at the most competitive prices.

We're the oldest commercial modular building company on the West Coast. Modern is 130 team members strong – and we're growing. We're a family owned and operated business, started by Don Rasmussen and carried on by his sons, Jim and Ken Rasmussen.

Our company is a design-and-build manufacturer, constructing everything from offices, medical building and classrooms – essentially anything but residential. **We've worked for government agencies across the country, built a blast-proof flight simulator for Boeing and constructed a four-story building at the Red Dog Mine near the Arctic Circle.**

Our modular construction offers significant savings over traditional, site-built construction. Our structures are factory-built, allowing construction to occur during any season, and installed quickly, saving time and reducing costs. We lease and sell temporary job-site trailers, mobile sales offices, construction-site offices, portable classrooms, complete schools, modular offices, medical clinics, modular daycare facilities, relocatable buildings, restroom/shower trailers and prefabricated buildings. We have our own fleet of delivery trucks, and maintain our own installation crews, equipment and service departments, so we're 100% responsible for our work.

We pride ourselves on being the number one choice for top-quality, environmentally friendly buildings at very competitive prices, with no dealer-reseller mark-ups. Our goal is your satisfaction – and making sure your needs have been met and exceeded. Call us today for more information.

TESTIMONIALS

What our clients have to say:

"Without Modern Building Systems' outstanding management and competent, professional staff, it would not have been possible to consistently meet our tight budgets and limited schedule."

*-Reg Martinson,
Director of Facilities
Evergreen School District*

CONTACT US TODAY

Oregon

P.O. Box 110 9493 Porter Road
Aumsville, OR 97325 USA
Phone: 503.749.4949
Fax: 503.749.4950

Washington

1550 Thornton Avenue SW
Pacific, WA 98047 USA
Phone: 253.863.8863
Fax: 253.863.8867

California

605 Sutter Street
West Sacramento, CA 95691 USA
Phone: 916.985.9852
Fax: 912.985.9865