

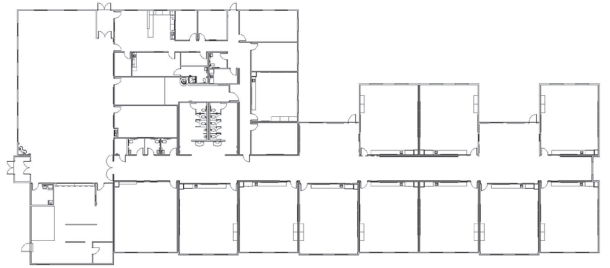


WILLARD SWING SCHOOL

Eugene, OR

This temporary “swing” school was an intricate project that needed to house both First Edison Elementary School and Camas Ridge Elementary School during the construction of new buildings on their respective campuses. Located in the southern part of Eugene, OR, the school has four buildings, which total an impressive 32,376 square feet. Apart from needing to house all classroom and staff accommodations within a short period of time, the school needed a lunchroom and a full service kitchen.

Modern tackled the additional challenge of joining such a large number of modular pieces on a single foundation. Building the modules at a plant and shipping them also allowed for on-time completion dates that were not subject to weather delays.



PROJECT HIGHLIGHTS

- The school district needed a temporary facility quickly regardless of its size. Construction lasted from Fall of 2019 until Spring of 2020.
- Remaining sensitive to the aesthetic of the surrounding area, the client chose a parapet style with a unique siding layout and accommodating colors.
- The primary campus building was made up of thirty-seven modules. Six additional modules were needed for three other double-wide classrooms, totaling forty-three modules and four buildings.

SUSTAINABILITY FEATURES

- Natural gas lines were run to service the HVAC and kitchen appliances.
- Windows were placed for maximum exposures to daylight, reducing the need for artificial lighting.
- Solar tubes were added for darker spaces such as hallways and interior rooms.
- The overall project maintains greater integrity as it is not affected by corrosive weather.



WE OFFER QUALITY
FACTORY-DIRECT
BUILDINGS