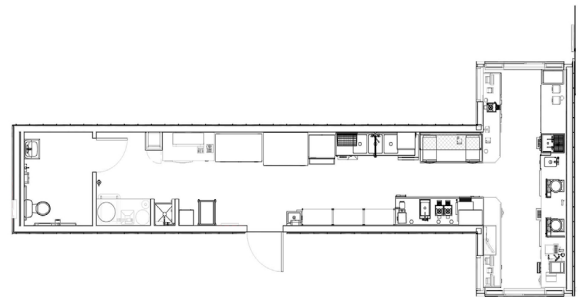




## SEATTLE FIRE DEPARTMENT

Seattle, WA

In conjunction with the Seattle Fire Department, Modern designed and installed a fully operational fire station. The units were designed for multiple relocations that would save time, money and natural resources in future building relocations. The buildings include a fully functioning fire station, a fully operational kitchen, a laundry facility, a living quarters and a recreational area. The buildings were placed in within a very limited space which made it slightly difficult for the buildings to be placed on-site. Once the department was finished using the buildings they were easily removed from the site with the site restored to its previous condition with little or no impact on the surrounding area.



### PROJECT HIGHLIGHTS

- The building has dimensions of 28'x66'.
- The building area was 1848 square feet.
- The foundation is Block and Level.



WE OFFER QUALITY  
FACTORY-DIRECT BUILDINGS  
AT A PREDICTABLE COST