

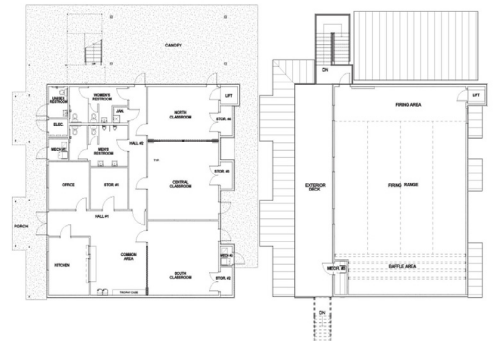


PAUL BUNYAN RIFLE & SPORTSMAN'S CLUB

Southhill, WA

This 5,200 sq. ft. commercial, two story, multipurpose facility is the new home for the Rifle and Sports Club located in western Washington. The space on the first level includes extensive classroom and meeting spaces, a commercial kitchen and private offices. The entire second floor is composed of an indoor gun range. The structure features an interior traction elevator that maximizes occupant accessibility between floors.

The building design features triple pane all weather insulated window panels. The deck and stairs located on the exterior perimeter of the building were designed and built in an off-site location to decrease on-site construction and overall ambient noise. Gun safety technology was implemented to capture and contain ammunition. The building also maintains strict environmental and energy saving standards by recycling their used bullet casings.



PROJECT HIGHLIGHTS

- The building has dimensions of 56'x54'.
- The building area was 3024 square feet.
- The foundation is Stem Wall.



WE OFFER QUALITY
FACTORY-DIRECT BUILDINGS
AT A PREDICTABLE COST