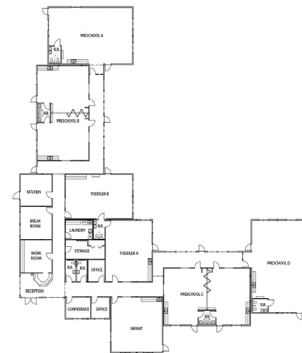




OCDC MULINO

Mulino, OR

Dedicated to improving the lives of underprivileged children and families, the Oregon Child Development Coalition (OCDC) provides childcare services to working families. Modern was contracted to provide a turnkey construction solution for a new project in Mulino, OR. Several fir trees were selectively removed from the site and their lumber made into large beams utilized in the canopy walkways and play structure as a salute to the sustainable efforts made during the construction process. Modern's design team, OCDC, and an outside architect collaborated on a building design that includes large picture windows, sound rated folding partition walls, clear grain wood windows, and door finishes, roof mounted heat pumps, and various environmentally sustainable products combined with architectural appeal.



PROJECT HIGHLIGHTS

- The building has dimensions of 166'x152'.
- The building area was 25232 square feet.
- The foundation is Stem Wall.



WE OFFER QUALITY
FACTORY-DIRECT BUILDINGS
AT A PREDICTABLE COST