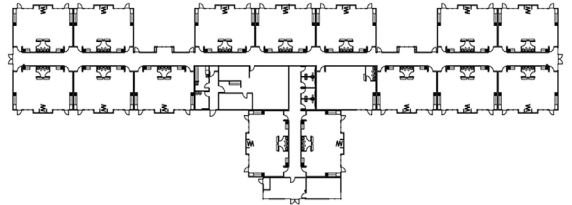




## OCDC HILLSBORO

Hillsboro, OR

Oregon Childhood Development Coalition (OCDC) has constructed many modular education facilities in partnership with Modern. Each building reflects the personality of the community that it serves. This building features covered play areas to keep students active in the rainy Northwest season and a cutting-edge design to utilize space efficiency, all while blending the building with the site's natural features and existing foliage. The same type of care went into choosing finishes, including green flooring, LowE windows (vital considering the amount of daylight involved), reclaimed lumber fencing and innovative playground equipment.



### PROJECT HIGHLIGHTS

- The building has dimensions of 377'x64'.
- The building area was 24128 square feet.
- The foundation is Stem Wall.



WE OFFER QUALITY  
FACTORY-DIRECT BUILDINGS  
AT A PREDICTABLE COST