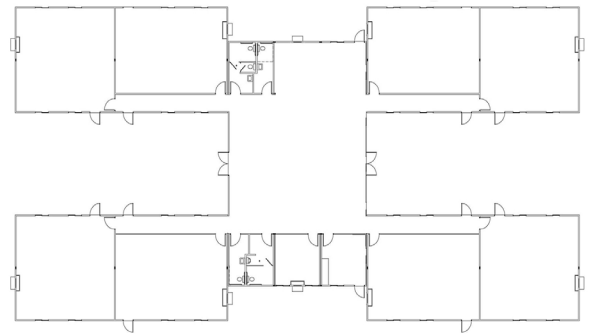




MCMINNVILLE SCHOOL DISTRICT

McMinnville, OR

McMinnville School District approached Modern when the need for an early childhood and after school facility arose. In order to improve the appearance and accessibility of the facility, the 5,376 square foot building was “pit set” so that the entryways were all at grade, eliminating the need for ramps and landings. The facility has cement fiber lap siding, solid surface flooring and durable wall panels to make maintenance and cleaning easy and long lasting. The building has four classrooms, multiple restrooms and a large multipurpose area which allows for flexibility when dealing with multiple age groups.



PROJECT HIGHLIGHTS

- The building has dimensions of 82'x106'.
- The building area was 3584 square feet.
- The foundation is Block and Level.



WE OFFER QUALITY
FACTORY-DIRECT BUILDINGS
AT A PREDICTABLE COST