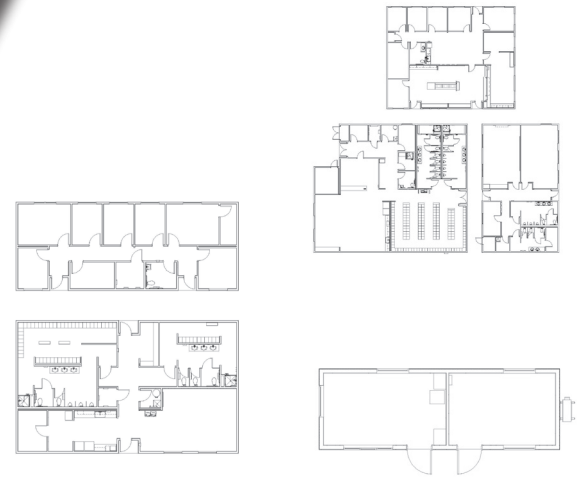




## KING COUNTY METRO SOUTH INTERIM BASE Tukwila, WA

The King County Department of Transportation needed new bus operations and vehicle maintenance buildings for their South Interim Base in Tukwila, WA. This complex project included three operations buildings, two maintenance buildings, and a small hostler shack that totaled 12,970 square feet. The facilities needed to support all office staff, maintenance staff, and bus drivers; this included locker rooms, an exercise room, a classroom, drivers' lounge, TV room, kitchen areas, and a dispatch area.

Despite site issues and delays from the pandemic, Modern was able to meet the original project deadlines. Buildings were installed at a fraction of the time compared to stick built. Specifications from the City of Seattle, King County, and the Transportation Department placed strict parameters on the new facility, all of which had to be met within an equally strict budget.



### PROJECT HIGHLIGHTS

- As one of the longer project timelines in Modern's portfolio, from January 2019 to March 2021.
- All buildings had to meet the standards of other permanent bus bases.
- Nineteen modules were used to construct a total of six buildings: three operations buildings, two maintenance buildings, and a hostler shack.

### SUSTAINABILITY FEATURE

- The mechanical system meets all of King County's specifications.
- All buildings meet the City of Seattle's energy codes.
- Energy efficient split systems allowed for zone-specific temperature throughout the entire facility.
- Off-site construction eliminated high-volume waste.



**WE OFFER QUALITY  
FACTORY-DIRECT  
BUILDINGS**