

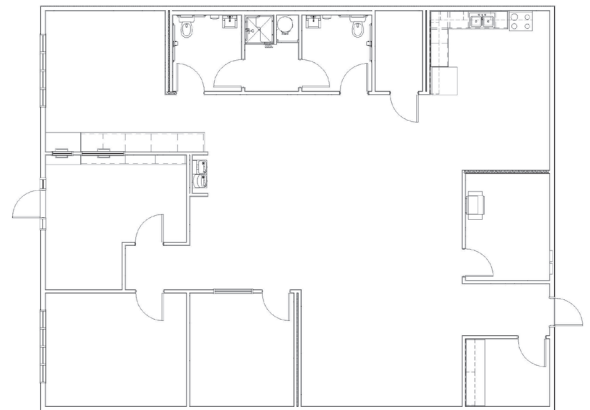


GRANITE FALLS POLICE DEPARTMENT

Granite Falls, WA

The Granite Falls Police Department needed a new facility that would reflect the style and richness of its next door neighbor, City Hall. This 2464 square foot police station included a large front porch, custom corbels, board-and-batten siding, and matching roof to create a complimentary aesthetic.

The initial plan was to remodel the existing Police Department, but all bids came in over budget. Modern offered an alternative with modular construction; they were able to build an entirely new facility that met city budget constraints.



PROJECT HIGHLIGHTS

- The front of the building and the lobby were required to have bullet proof windows.
- The windows and front doors were custom made to meet the City's aesthetic requirements.
- The custom corbels were made by a local manufacturer, adding a local touch while saving on transport costs.
- Even with the pandemic in full swing and several customizations, the Police Department only took thirteen months to complete, from February 2020 to March of 2021.

SUSTAINABILITY FEATURES

- The building module was built off-site and then delivered, eliminating much of the waste from traditional construction.
- Building the Police Department at one of Modern's plants ensured product quality and longevity, as it was protected from the elements from start to finish.



WE OFFER QUALITY
FACTORY-DIRECT
BUILDINGS