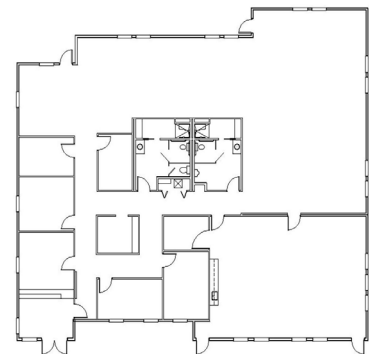




## DORENA LAKE GRC OFFICE

Cottage Grove, OR

The U.S. Forest Service contracted through GSA for a new office and conference center in Dorena, OR. Modern provided a turnkey project that included all design and construction for the facility and the site, resulting in significant savings. Geo-technical reports revealed the site had a high water table and low-bearing pressure. Modern's in-house engineers provided a solution through a caisson supported grade beam foundation. Insufficient potable water at the site required that the water supply system be augmented with a pressure assist pump system to provide for adequate pressure. Modern's design assured the Forest Service a stable and long lasting foundation.



### PROJECT HIGHLIGHTS

- The building has dimensions of 84'x60'.
- The building area was 5040 square feet.
- The foundation is Stem Wall.



WE OFFER QUALITY  
FACTORY-DIRECT BUILDINGS  
AT A PREDICTABLE COST