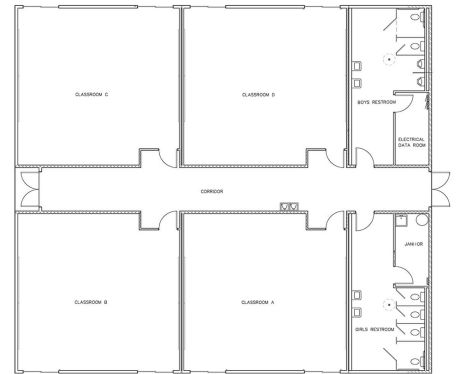




## CASCADE MIDDLE SCHOOL

Vancouver, WA

Due to growing school enrollment, Modern constructed an 8,064 sq. ft. classroom facility in two phases at the Cascade Middle School campus. The building is composed of 8 spacious classrooms, each contains built-in white/tack boards, cabinetry, and easily cleanable finishes. The building includes the latest technology in low voltage systems (projection, high speed data, phone, intercom, and alarm), site installed paneled roof and numerous sustainable building materials (cellulose insulation, cement fiber lap siding, low VOC adhesives and paints). Energy efficient lighting incorporates day lighting zones.



### PROJECT HIGHLIGHTS

- The building has dimensions of 70'x64'.
- The building area was 4480 square feet.
- The foundation is Stem Wall.



WE OFFER QUALITY  
FACTORY-DIRECT BUILDINGS  
AT A PREDICTABLE COST